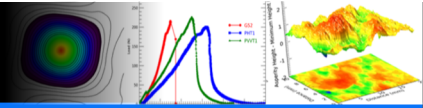
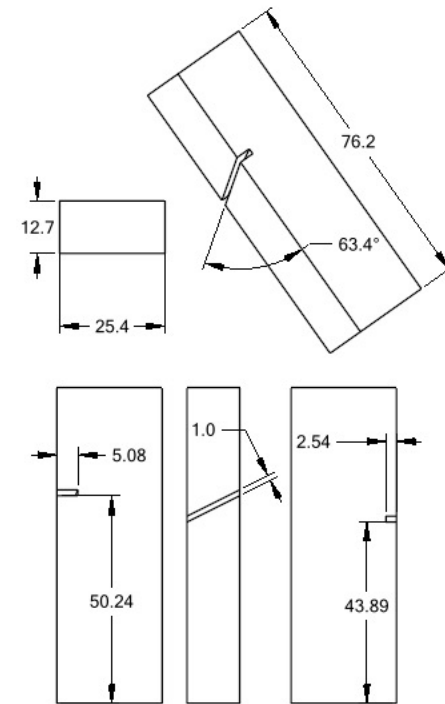
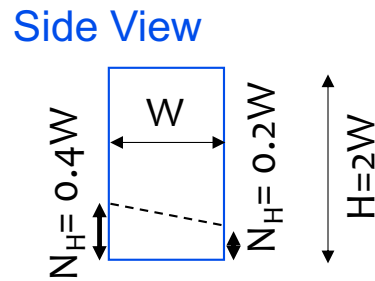
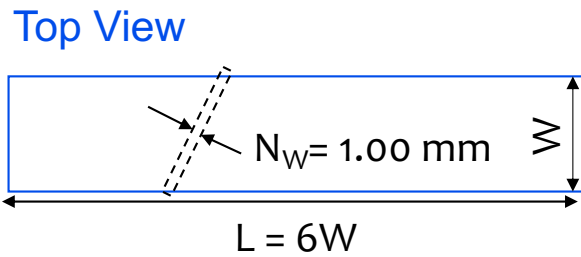
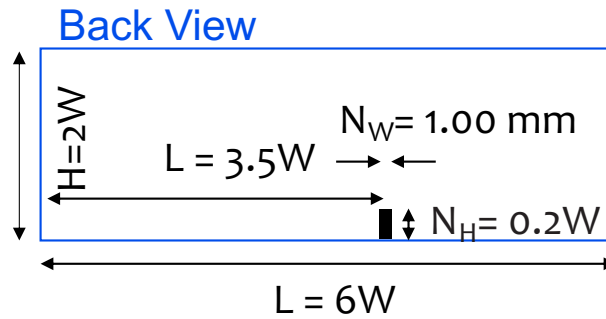
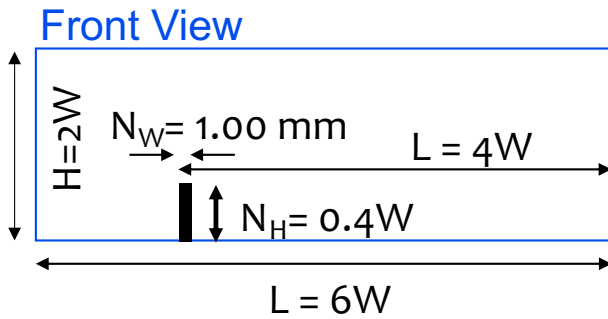


Challenge Geometry: Notch Geometry & Location

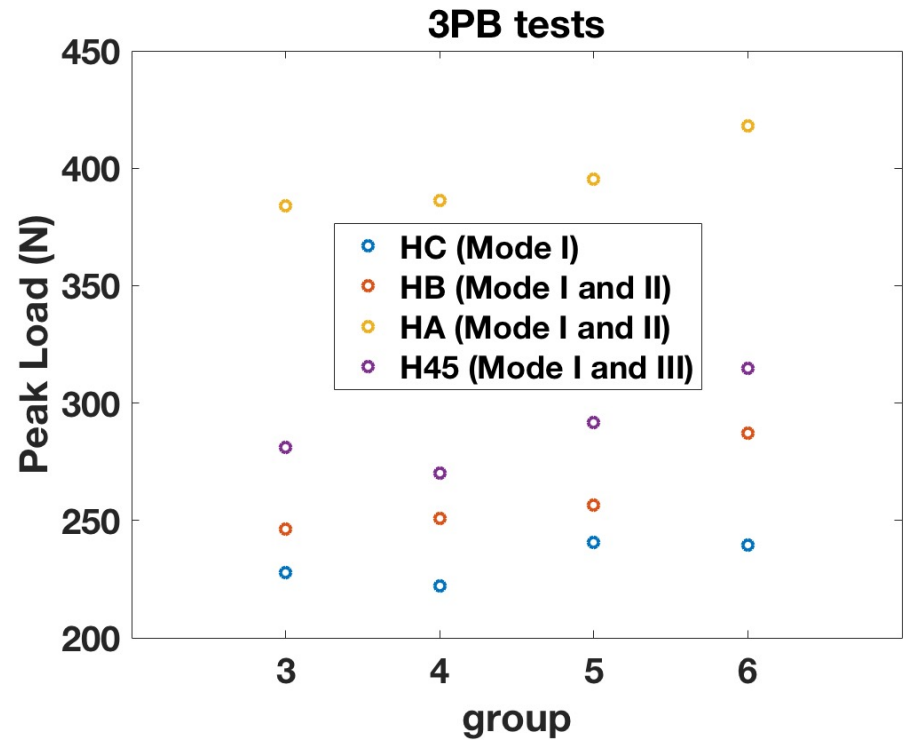
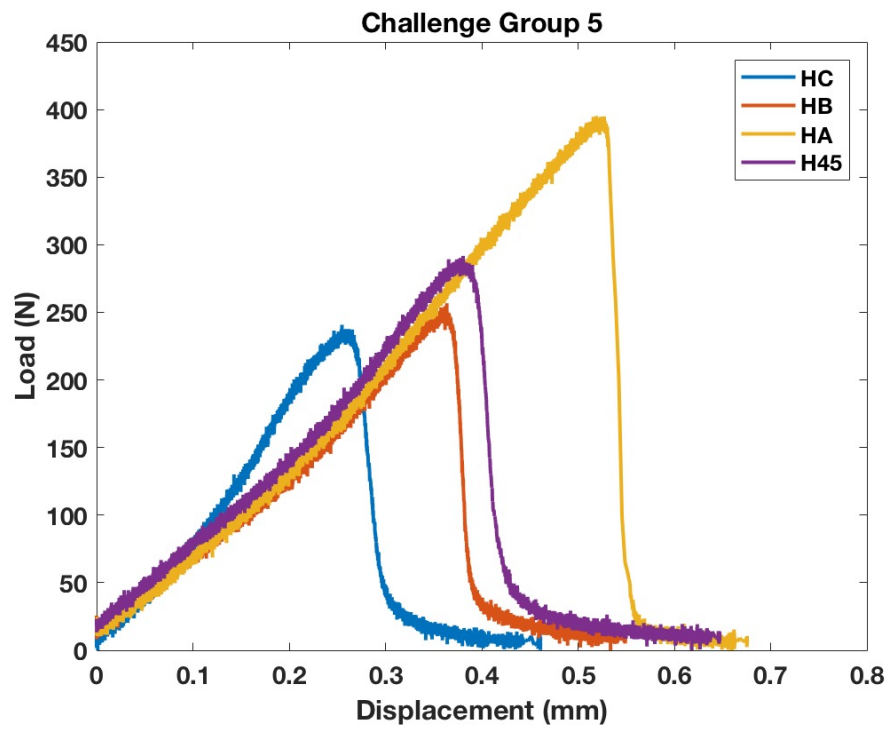


Off Center Notch - Angle

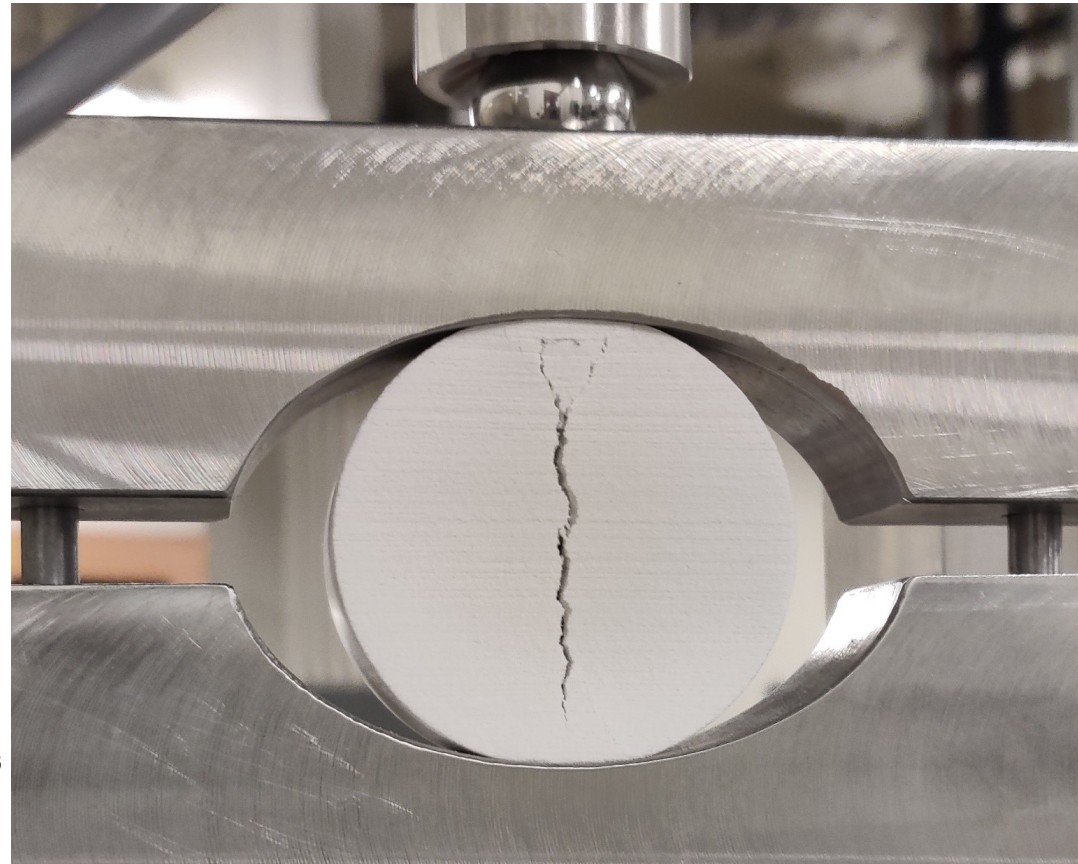
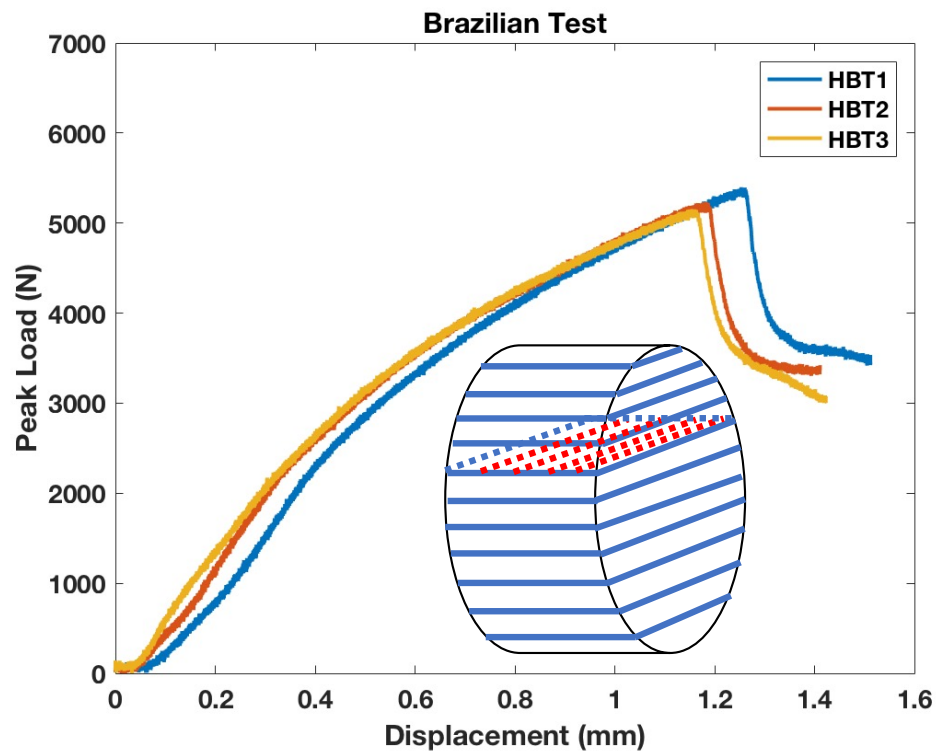
Unit: mm



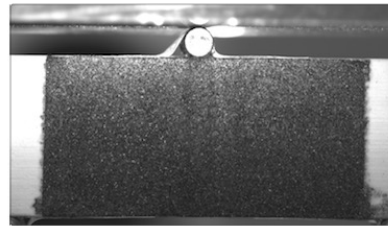
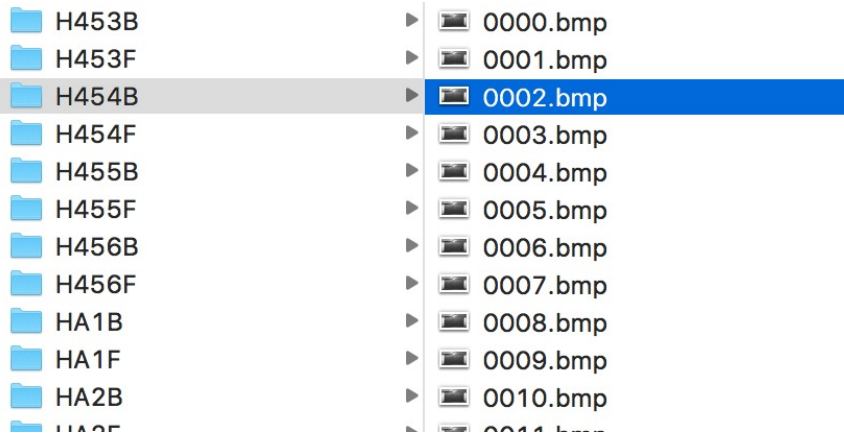
3PB Test Results from Calibration Experiments



Brazil Testing Results (3 Experiments)



DIC



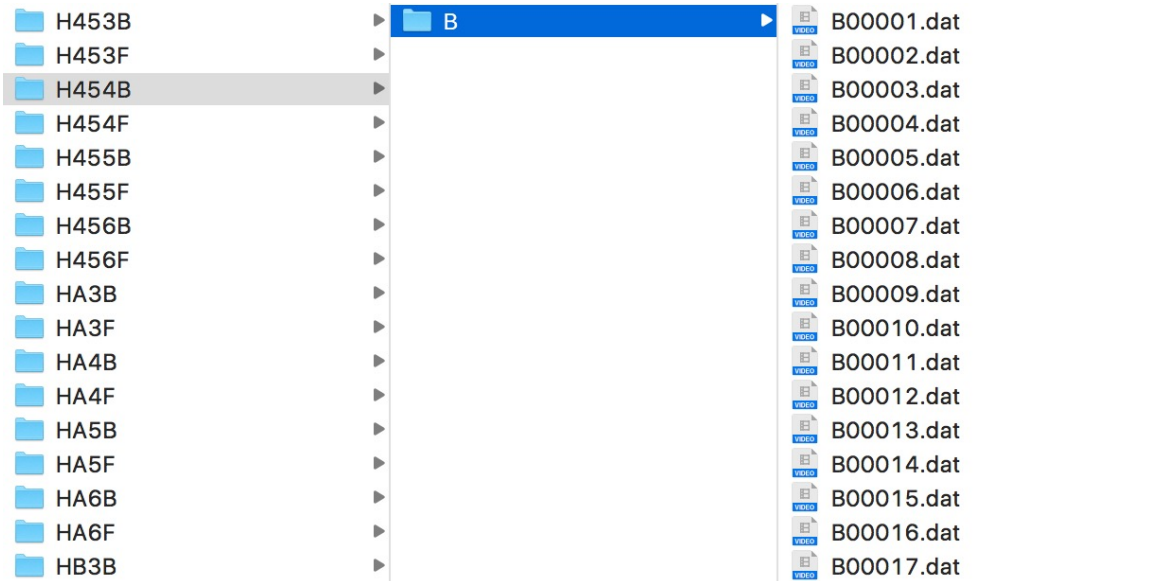
Raw images from testing are provided in .bmp format. Sampling rate 1 Hz

Analyzed DIC data are provided in .dat format

H454B:
'H45' means 3pb test sample of H45 type
(Mixed Mode I and III)

'4' means same from group No. 4. Group No. 3,
4, 5, and 6 data are provided.

'F' means the front surface; 'B' means the back
surface of the sample

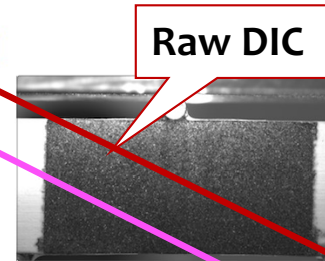
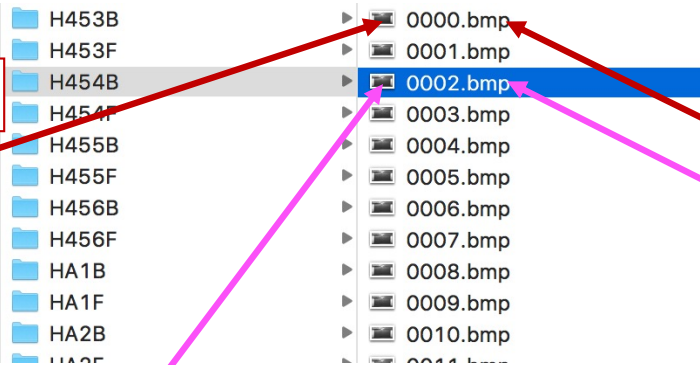


Sync Load and Displacement Data with DIC

Load

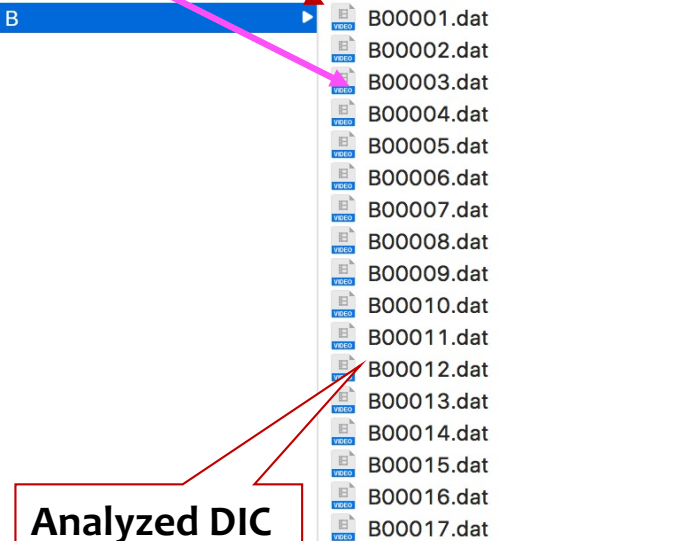
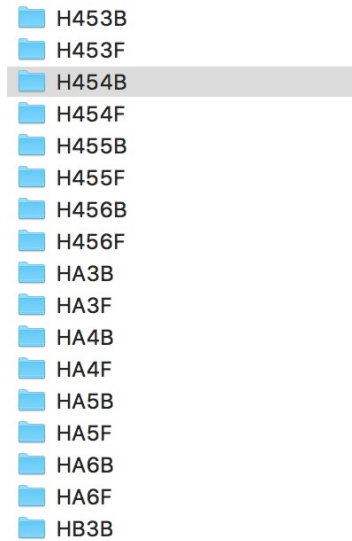
Displacement

	A	B
1	0	0
2	-1.4681	9.65E-05
3	1.5163	0.00011492
4	-0.54869	0.00016865
5	-0.36703	0.00016258
6	-1.6535	0.00016025
7	-2.343	0.000178
8	-2.8472	0.00016164
9	-3.3551	0.0001084
10	-5.928	0.00013271
11	0.092684	0.00011918
12	2.3912	0.00010237
13	0.27805	9.02E-05
14	5.0123	8.09E-05
15	0.59688	7.16E-05
16	-0.96391	0.00010938
17	-0.22986	9.02E-05
18	-2.0205	0.00010328
19	-0.27434	0.00016631
20	0.13717	0.00016959
21	-1.4236	0.00014205
22	2.9881	0.00016963
23	1.609	0.00020373
24	3.0808	0.00020467
25	-2.2059	0.00019393



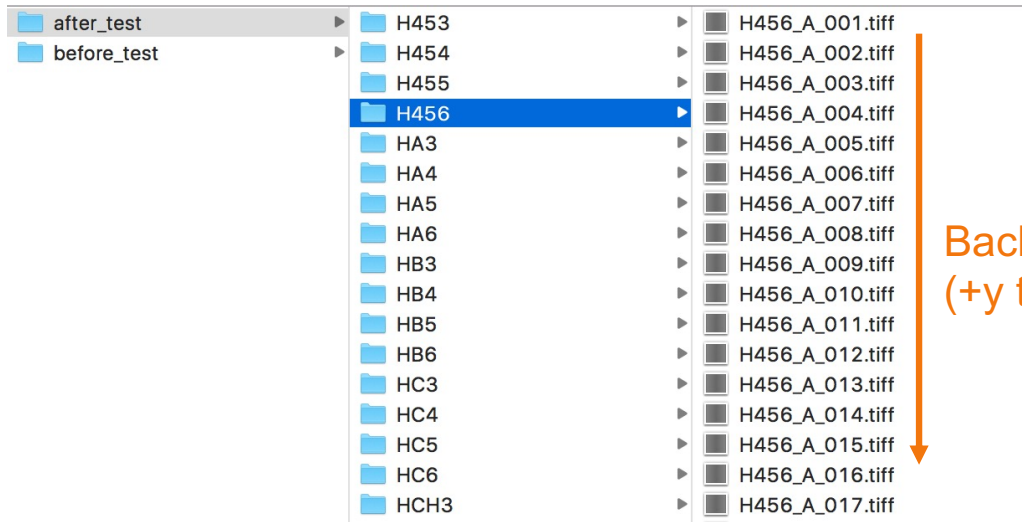
Count number i starts from 0
Count number relationship

Load	DIC Raw	DIC Analyzed
1	0000	B00001
11	0001	B00002
$10*i+1$	i	$i+1$

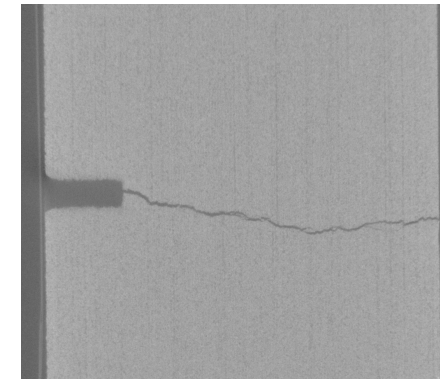


Analyzed DIC

Xray-CT



Back to front
(+y to -y)



Bottom to top (-z to +z)

Left to right
(-x to +x)

Notch area was scanned before and after the test.

Image stacks are slicing of the sample from back surface to the front surface.

Bottom of the image is the right side of the sample; left side of the image is the bottom side of the sample (with notch).

