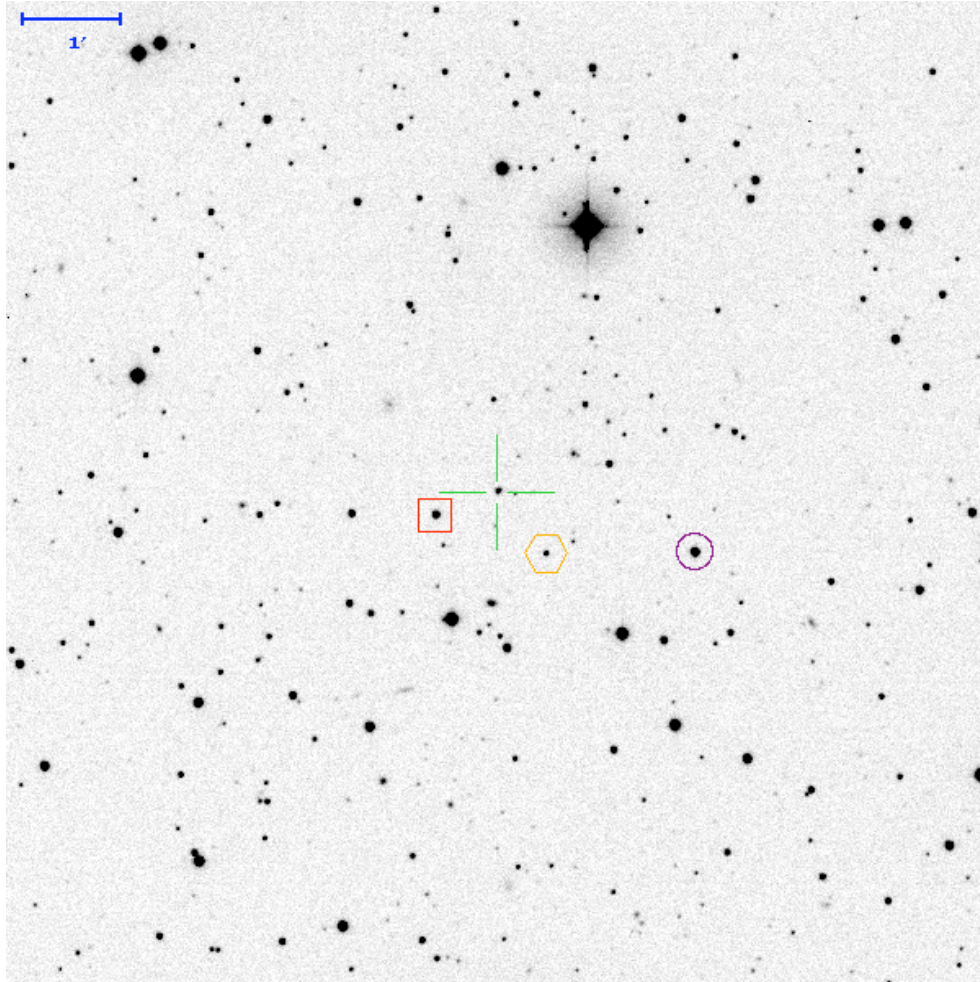
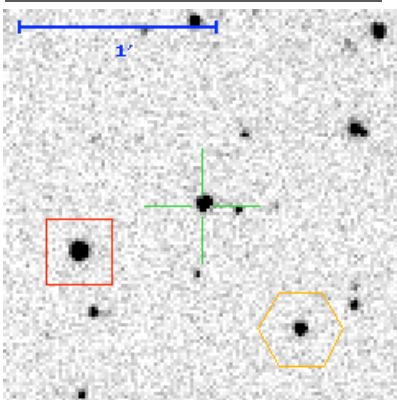


# Finding Chart for PTF 10qjl (id=233873935)



New image shown ( $R_{\text{lim}} = 21.0$ ). N is up, E is left.

Candidate (green cross)		
RA	249.99719507 16:39:59.33	(J2000)
DEC	12.107072028 +12:06:25.5	
Mag (sub)	$18.31 \pm 0.04$	R-band
Mag (ref)	$18.65 \pm 0.02$	



		To			
		Target	box	hex	circle
From	Target	0	38.15" E 14.27" S	30.07" W 38.16" S	122.35" W 37.37" S
	box	38.15" W 14.27" N	0	68.22" W 23.89" S	160.50" W 23.10" S
	hex	30.07" E 38.16" N	68.22" E 23.89" N	0	92.28" W 0.79" N
	circle	122.34" E 37.37" N	160.49" E 23.10" N	92.28" E 0.79" S	0

Offset Star S1 (red box)		
RA	250.00803237 16:40:01.93	(J2000)
DEC	12.103107587 +12:06:11.2	
Mag (ref)	$16.14 \pm 0.00$	R-band

Offset Star S2 (orange hex)		
RA	249.98865212 16:39:57.28	(J2000)
DEC	12.096470997 +12:05:47.3	
Mag (ref)	$17.86 \pm 0.01$	R-band

Offset Star S3 (purple circle)		
RA	249.96243765 16:39:50.99	(J2000)
DEC		

DEC	12.09669146 +12:05:48.1	
Mag (ref)	15.46 ± 0.00	R-band

Show the  image  
Make the overview  arcsec wide  
Make the zoomed view  arcsec wide