

Superradiance in inverted multilevel atomic clouds

R. T. Sutherland^{1,*} and F. Robicheaux^{1,2,†}

¹*Department of Physics and Astronomy, Purdue University, West Lafayette, Indiana 47907, USA*

²*Purdue Quantum Center, Purdue University, West Lafayette, Indiana 47907, USA*

(Received 13 January 2017; published 28 March 2017)

This work examines superradiance in initially inverted clouds of multilevel atoms. We develop a set of equations that can approximately calculate the temporal evolution of N coupled atoms. This allows us to simulate clouds containing hundreds of multilevel atoms while eschewing the assumption and/or approximation of symmetric dipole-dipole interactions. This treatment is used to explore the effects that dephasing causes by elastic dipole-dipole interactions and that competition between multiple transitions has on superradiance. Both of these mechanisms place strong parametrical restrictions on a given transition's ability to superradiate. These results are likely important to recent experiments that probe superradiance in Rydberg atoms.

DOI: [10.1103/PhysRevA.95.033839](https://doi.org/10.1103/PhysRevA.95.033839)

I. INTRODUCTION

The fact that coherent radiation can dramatically alter physical phenomena [1] has resurfaced at the forefront of physics. Studies have shown that superradiance must be considered when studying atomic [2–22], biological [23,24], and condensed matter systems [25–27]. Since its recent revival, superradiance has led to conflicting ideas in the Rydberg-atom community. At first glance, transitions between high-lying Rydberg states seem like perfect candidates for superradiance [12,13,19]. Because of their long wavelengths, Rydberg transitions allow experimentalists to reach the limit first described by Dicke [1], where atoms are placed in a volume with a radius that is very small relative to the wavelength. Later theoretical works [19,28,29], however, argued that putting a cloud of atoms in this regime would result in large dipole-dipole interactions that quickly dephase the transition and destroy superradiance. This implies that transitions between high-lying Rydberg levels should *not* superradiate. To exacerbate the confusion, conflicting experimental results have been reported, with some groups claiming to have either directly or indirectly observed Rydberg-atom superradiance [12–14,30] and one claiming to have observed no superradiance at all [31]. In order to unravel these experimental and theoretical differences, new developments are needed.

The physics of superradiance in a vacuum is governed by the set of dipole-dipole interactions between every atom pair. These interactions can be traced back to two distinct types of photon exchanges, real and virtual. The exchange of real photons [see Eq. (5)] contributes to the collective decay of the atomic ensemble. These *inelastic* dipole-dipole interactions result in either superradiance or subradiance. As the value of $|\vec{r}_i - \vec{r}_j| \rightarrow 0$, where $|\vec{r}_i - \vec{r}_j|$ is the spatial distance between atoms i and j , the value of every inelastic coupling approaches $\Gamma_\alpha/2$, where Γ_α is the decay rate of the transition $e \rightarrow \alpha$ in an isolated atom [since the excited level is the same for every transition (see Fig. 1), the lower energy level α is used as the label of a given transition]. Resultantly, this part of the dipole-dipole interaction is completely symmetric for sufficiently dense clouds, i.e., the Dicke limit [1]. Not

included in Dicke's work are the interactions that result from exchanges of virtual photons [see Eq. (3)]. These exchanges cause shifts between the energy levels of the system, often referred to as the collective or cooperative Lamb shifts [32]. These couplings will be referred to as elastic dipole-dipole interactions from here on. In a vacuum, the magnitude of the elastic interaction between two atoms diverges proportionally to $1/(k_\alpha |\vec{r}_i - \vec{r}_j|)^3$, where $k_\alpha \equiv 2\pi/\lambda_\alpha$. For dense atomic clouds, this results in large and random energy shifts between levels that dephase the system, quelling superradiance. This will be referred to as elastic dephasing in the rest of this paper.

A rigorous numerical treatment of this effect requires an implementation of the superradiance master equation [29] or, equivalently, the quantum Monte Carlo wave-function algorithm [33]. Unfortunately, both of these calculations grow exponentially with the number of atoms being simulated N . So far, this has limited numerical calculations to systems such that $N \sim 10$ or less. While recent treatments have been developed that permit simulations involving large numbers of highly excited atoms [13,34,35], so far they rely on symmetries that result from either the assumption or approximation of symmetric dipole-dipole interactions. These approximations are not valid in this work because they ignore elastic dephasing.

Because of this, we derive and implement a numerical approach that scales proportionally to N^4 , rather than exponentially. This enables the simulation of initially inverted clouds of hundreds of multilevel atoms. Note that a system containing initially inverted atoms is qualitatively different than a system where a particular transition is triggered, such as that in [14]. Unlike previous methods, our approach can fully incorporate the inhomogeneous dipole-dipole interactions present in the cloud. This is done by solving the set of differential equations that describe the expectation values of the operators: $b_i^{\alpha-} b_j^{\alpha+}$, where $b_i^{\alpha-(+)}$ represents the lowering(raising) operator for the $e \rightarrow \alpha$ transition of the i th atom. The resulting equations are then truncated by factorizing the higher-order correlation operators. Since a full analysis of superradiating Rydberg atoms requires an understanding of the competition between many potentially superradiant transitions, the derivation assumes an initially excited state that can decay into an arbitrary number of lower-energy states. The equations are then implemented in order to study the rich physics that occurs in clouds of two-, three-, and four-level atoms (see Fig. 1).

*rsutherl@purdue.edu

†robichf@purdue.edu

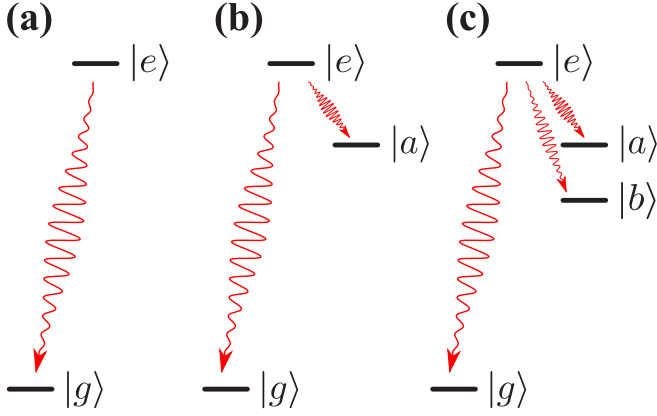


FIG. 1. This paper studies superradiant cascades in clouds of (a) two-, (b) three-, and (c) four-level atoms. (a) Two-level system coupled via dipole-dipole interactions. (b) Three-level system, where dipole-dipole interactions for the a transition are considered, but are not considered for the g transition, due to the relatively small value of λ_g . (c) Four-level system, where an additional interacting transition b has been added to the system represented in (b).

This paper is organized in the following way. In Sec. II the equations that describe a system containing N multilevel atoms are derived. In Sec. III this system of equations is used to simulate a cloud of two-level atoms. Here it is demonstrated how superradiance is limited by elastic dephasing in high-density systems and by diffraction in low-density systems. The result of this is that for a cloud with a given N and density \mathcal{N} there is a particular value of λ_g such that the coherent emission is at a maximum. In Sec. IV it is shown that when a system has multiple decay channels, superradiance develops in a very different manner than when there is only one. Here we mimic an elementary Rydberg system by including one transition to a high-lying state a with a value of λ_a such that atoms couple via dipole-dipole interactions significantly. On top of this, we include one transition to the ground state g with a very small λ_g such that dipole-dipole interactions are negligible [see Fig. 1(b)]. This section shows that the presence of an alternate decay path strongly diminishes the buildup of superradiance. Section V shows the physics that results when multiple transitions can superradiate at once. This section indicates that the previously proposed mechanism for superradiance in Rydberg atoms [13], where states tend to superradiate via transitions with the largest values of λ_α , is likely not the dominant mechanism in many Rydberg-atom systems. Here it is argued that only transitions with λ_α lying within a certain range of $\lambda_\alpha \mathcal{N}^{1/3}$ superradiate. This might lead to an explanation of the current experimental disagreements [12–14,31].

II. NUMERICAL TREATMENT

A. Master-equation evaluation

The time dependence of the reduced density matrix $\hat{\rho}$ is given by the master equation [36]

$$\frac{d\hat{\rho}}{dt} = -\frac{i}{\hbar}[H_{\text{ed}}, \hat{\rho}] + \mathcal{L}(\hat{\rho}). \quad (1)$$

Here H_{ed} represents the elastic dipole-dipole interaction defined by the Hermitian Hamiltonian

$$H_{\text{ed}} = \sum_{i \neq j, \alpha} \hbar f_{ij}^\alpha b_i^{\alpha+} b_j^{\alpha-}, \quad (2)$$

where $b_i^{\alpha+} \equiv |e_i\rangle \langle \alpha_i|$, $b_i^{\alpha-} \equiv |\alpha_i\rangle \langle e_i|$, and

$$f_{ij}^\alpha = \frac{3\Gamma_\alpha}{4} \left\{ (1 - 3\cos^2\phi_{ij}^\alpha) \left(\frac{\sin\xi_{ij}^\alpha}{\xi_{ij}^{\alpha 2}} + \frac{\cos\xi_{ij}^\alpha}{\xi_{ij}^{\alpha 3}} \right) - \sin^2\phi_{ij}^\alpha \frac{\cos\xi_{ij}^\alpha}{\xi_{ij}^\alpha} \right\}. \quad (3)$$

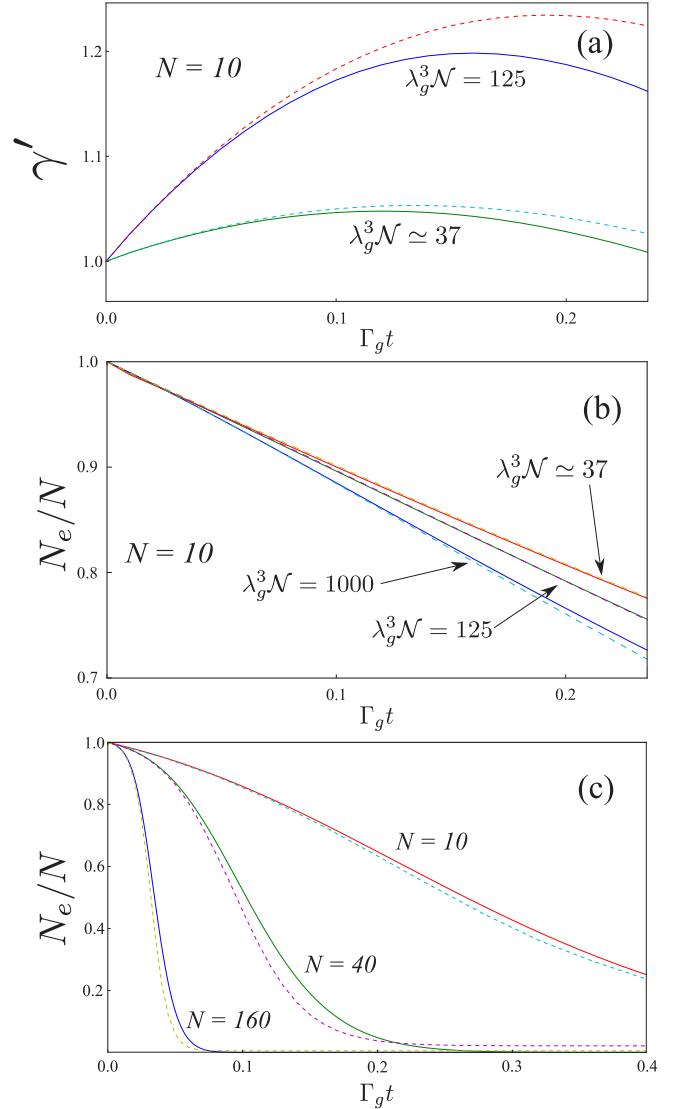


FIG. 2. Comparison of the time dependence resulting from Eq. (1) (solid line) and Eq. (11) (dashed line) for clouds of two-level atoms. (a) Photon emission rate per atom $\gamma' \equiv \gamma/N$ for clouds where $N = 10$ and densities: $\lambda_g^3 \mathcal{N} = 125$ and $\lambda_g^3 \mathcal{N} \simeq 37$. (b) Excitation probability N_e/N for clouds where $N = 10$ and $\lambda_g^3 \mathcal{N} \simeq 1000$, 125, and 37. Note that, in the figure, the values of $\lambda_g^3 \mathcal{N}$ are inversely proportional to the slope of N_e . (c) Excitation probability N_e/N for $N = 10, 40$, and 160 two-level atoms using the Dicke model, i.e., $\mathcal{N} \rightarrow \infty$ and $H_{\text{ed}} = 0$. Results are shown for the full calculation obtained using Eq. (1), as well as the approximate Eq. (11). Note that the two calculations scale with N in the same manner.

In addition, $\mathcal{L}(\hat{\rho})$ is the Lindblad superoperator given by

$$\mathcal{L}(\hat{\rho}) = \sum_{i,j,\alpha} \Gamma_{ij}^{\alpha} \left(b_j^{\alpha-} \hat{\rho} b_i^{\alpha+} - \frac{1}{2} b_i^{\alpha+} b_j^{\alpha-} \hat{\rho} - \frac{1}{2} \hat{\rho} b_i^{\alpha+} b_j^{\alpha-} \right), \quad (4)$$

where Γ_{ij}^{α} is the inelastic dipole-dipole interaction of atoms i and j for the $e \rightarrow \alpha$ transition,

$$\Gamma_{ij}^{\alpha} = \frac{3\Gamma_{\alpha}}{2} \left\{ (1 - 3 \cos^2 \phi_{ij}^{\alpha}) \left(\frac{\cos \xi_{ij}^{\alpha}}{\xi_{ij}^{\alpha 2}} - \frac{\sin \xi_{ij}^{\alpha}}{\xi_{ij}^{\alpha 3}} \right) + \sin^2 \phi_{ij}^{\alpha} \frac{\sin \xi_{ij}^{\alpha}}{\xi_{ij}^{\alpha}} \right\}. \quad (5)$$

In this notation, ϕ_{ij}^{α} is the angle between the α th dipole moment and the relative position of atoms i and j , $\vec{r}_i - \vec{r}_j$. In addition, $\xi_{ij}^{\alpha} = k_{\alpha} |\vec{r}_i - \vec{r}_j|$, where k_{α} is the wave number of the $e \rightarrow \alpha$ transition, $2\pi/\lambda_{\alpha}$.

The fact that the system of interest starts in state $|eee \dots e\rangle$ and has no driving term leads to a massive truncation of the Liouville space. If one expresses $\hat{\rho}$ in the form

$$\hat{\rho} = \sum_{m,n} c_{mn} |m\rangle \langle n|, \quad (6)$$

it can be shown straightforwardly that the operators in Eq. (1) will *only* connect to elements of $\hat{\rho}$ such that $|m\rangle$ and $|n\rangle$ contain the same number of atoms in each level. This constitutes only a small fraction of $\hat{\rho}$. For a system of N two-level atoms, the full Liouville space contains 4^N matrix elements. However, only

$$\sum_{k=0}^N \binom{N}{k}^2 = \binom{2N}{N} \quad (7)$$

of these elements are actually nonzero. Incorporating this into our numerical algorithm enables the exact calculation of Eq. (1) up to ten atoms (see Fig. 2).

B. Approximate evaluation of operators

The problems addressed in this paper require simulating hundreds of atoms, while avoiding the usual mean-field approximations that ultimately ignore elastic dephasing [13,34,35]. This is accomplished by solving the differential

equations that describe the probability of atom i being in state α , or in operator form $\langle b_i^{\alpha-} b_i^{\alpha+} \rangle$, as well as the quadratic correlation functions for atoms i and j , defined as $\langle b_i^{\alpha-} b_j^{\alpha+} \rangle$. The change in the expectation value of an operator Ω with time is determined by

$$\frac{d}{dt} \langle \Omega \rangle = \text{Tr} \left\{ \Omega \frac{d\hat{\rho}}{dt} \right\}. \quad (8)$$

Using Eqs. (1) and (8), one can derive $\frac{d}{dt} \langle b_i^{\alpha-} b_i^{\alpha+} \rangle$ (see the Appendix). This gives

$$\begin{aligned} \frac{d}{dt} \langle b_i^{\alpha-} b_i^{\alpha+} \rangle &= \Gamma_{\alpha} \left(1 - \sum_{\beta} \langle b_i^{\beta-} b_i^{\beta+} \rangle \right) \\ &\quad + 2 \sum_{j \neq i} \text{Re} \{ g_{ij}^{\alpha} \langle b_j^{\alpha-} b_i^{\alpha+} \rangle \}, \end{aligned} \quad (9)$$

where g_{ij}^{α} is the complex dipole-dipole interaction ($g_{ij}^{\alpha} \equiv i f_{ij}^{\alpha} + \Gamma_{ij}^{\alpha}/2$). These equations are dependent on the quadratic correlation functions, which may be solved for in the same manner (see the Appendix). This yields a system of equations that is not closed, because solving for the quadratic correlation functions results in equations that depend on the quartic correlation functions. To avoid this, the system of equations is truncated by factorizing the quartic correlation functions in the following manner:

$$\begin{aligned} \langle b_n^{\alpha-} b_j^{\alpha+} b_m^{\beta-} b_m^{\beta+} \rangle &\simeq \langle b_n^{\alpha-} b_j^{\alpha+} \rangle \langle b_m^{\beta-} b_m^{\beta+} \rangle, \\ \langle b_m^{\beta-} b_j^{\beta+} b_n^{\alpha-} b_m^{\alpha+} \rangle &\simeq \langle b_m^{\beta-} b_j^{\beta+} \rangle \langle b_n^{\alpha-} b_m^{\alpha+} \rangle, \\ \langle b_m^{\alpha-} b_m^{\alpha+} b_n^{\beta-} b_n^{\beta+} \rangle &\simeq \langle b_m^{\alpha-} b_m^{\alpha+} \rangle \langle b_n^{\beta-} b_n^{\beta+} \rangle, \\ \langle b_n^{\alpha-} b_j^{\alpha+} b_m^{\alpha-} b_m^{\alpha+} \rangle &\simeq \langle b_n^{\alpha-} b_j^{\alpha+} \rangle \langle b_m^{\alpha-} b_m^{\alpha+} \rangle, \\ \langle b_m^{\alpha-} b_m^{\alpha+} b_n^{\alpha-} b_n^{\alpha+} \rangle &\simeq \langle b_m^{\alpha-} b_m^{\alpha+} \rangle \langle b_n^{\alpha-} b_n^{\alpha+} \rangle, \end{aligned} \quad (10)$$

where $\alpha \neq \beta$. These factorizations are chosen with two rules in mind. First, the quartic operators must be grouped such that both the raising and lowering operators act on the same transition, in order to ensure a closed system of equations. When this is satisfied, the quartic operator representing the population of state α for atom m (i.e., $b_m^{\alpha-} b_m^{\alpha+}$) is factored out. This is done so that the factorized terms are smaller when little decay has occurred, making our approximations accurate at early times. Implementing these approximations results in the following closed system of equations:

$$\begin{aligned} \frac{d}{dt} \langle b_n^{\alpha-} b_m^{\alpha+} \rangle &= -\langle b_n^{\alpha-} b_m^{\alpha+} \rangle \sum_{\beta} \Gamma_{\beta} + \sum_{j \neq m,n} g_{jm}^{\alpha*} \langle b_n^{\alpha-} b_j^{\alpha+} \rangle \left\{ 1 - \langle b_m^{\alpha-} b_m^{\alpha+} \rangle - \sum_{\beta} \langle b_m^{\beta-} b_m^{\beta+} \rangle \right\} \\ &\quad + \sum_{j \neq m,n} g_{nj}^{\alpha} \langle b_j^{\alpha-} b_m^{\alpha+} \rangle \left\{ 1 - \langle b_n^{\alpha-} b_n^{\alpha+} \rangle - \sum_{\beta} \langle b_n^{\beta-} b_n^{\beta+} \rangle \right\} \\ &\quad - \sum_{\beta \neq \alpha} \sum_{j \neq m,n} g_{nj}^{\beta} \langle b_n^{\alpha-} b_m^{\alpha+} \rangle \langle b_j^{\beta-} b_n^{\beta+} \rangle - \sum_{\beta \neq \alpha} \sum_{j \neq m,n} g_{jm}^{\beta*} \langle b_n^{\alpha-} b_m^{\alpha+} \rangle \langle b_m^{\beta-} b_j^{\beta+} \rangle \\ &\quad + 2 \text{Re} \{ g_{nm}^{\alpha} \} \left(1 - \sum_{\beta} \langle b_n^{\beta-} b_n^{\beta+} \rangle \right) \left(1 - \sum_{\beta} \langle b_m^{\beta-} b_m^{\beta+} \rangle \right) \\ &\quad - g_{nm}^{\alpha} \langle b_n^{\alpha-} b_n^{\alpha+} \rangle \left(1 - \sum_{\beta} \langle b_m^{\beta-} b_m^{\beta+} \rangle \right) - g_{nm}^{\alpha*} \langle b_m^{\alpha-} b_m^{\alpha+} \rangle \left(1 - \sum_{\beta} \langle b_n^{\beta-} b_n^{\beta+} \rangle \right). \end{aligned} \quad (11)$$

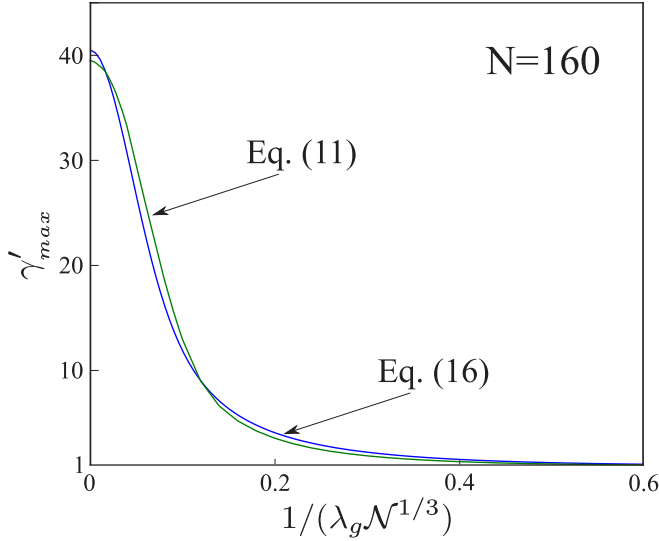


FIG. 3. Maximum photon emission rate per atom γ'_{max} given by both Eqs. (11) and (16) for a Gaussian cloud of 160 atoms when elastic dephasing is neglected. Note that the plots agree well, indicating the validity of both equations in the absence of dephasing.

The factorized terms are initially negligible. Therefore, at early times the results from Eq. (11) agree quantitatively with the results from Eq. (1). At later times, the two equations agree qualitatively. This is shown in Fig. 2(a), where the photon emission rate per atom γ' versus time is obtained by solving both Eqs. (1) and (11) for clouds of ten atoms. Figure 2(b) shows the probability of excitation

$$\frac{N_e}{N} \equiv \frac{1}{N} \sum_i \langle b_i^{\alpha+} b_i^{\alpha-} \rangle \quad (12)$$

versus time for ten atom clouds, using several values for density \mathcal{N} . The figure shows not only how Eq. (11) is qualitatively accurate at later times, but that it scales correctly with \mathcal{N} . Figure 4 also shows this by demonstrating that the photon emission maxima versus \mathcal{N} calculated with both methods closely match for ten atom clouds. Section III A further illustrates this fact for clouds where elastic dephasing is neglected (see Fig. 3). Figure 2(c) shows that Eq. (11) also scales correctly with N . Here Eq. (11) is compared with Eq. (1) for the pure Dicke model [i.e., $\lambda_g^3 \mathcal{N} \rightarrow \infty$, $\text{Im}(g_{ij}^\alpha) = 0$, and $H_{cd} = 0$] [1]. Using this model and clouds such that $N = 10, 40$, and 160, the results from Eq. (11) scale with N in the same way as the results from Eq. (1). Since the calculations of this work are intended to probe superradiance in regimes that are unreachable using Eq. (1), the fact that the output of Eq. (11) scales correctly with both N and $\lambda_g^3 \mathcal{N}$ indicates the validity of the calculations presented below.

One may note that the results of Fig. 2(b) appear to agree significantly better than those of Fig. 2(a). This is because the photon emission rates, shown in Fig. 2(a), correspond to the negative derivatives of the calculations in Fig. 2(b). These small differences in slope produce very small differences in N_e over the time frame shown. One may also note some differences in the calculations shown in Fig. 2(c), at longer times. For example, in the simulation of a cloud containing 40

atoms, the value of N_e/N approaches approximately 0.022 at later times, rather than 0. This illustrates the fact that the results of Eq. (11) are only exact when a small amount of population has decayed via an interacting transition.

For simplicity, all of the states considered here are assumed to be $M_J = 0$. Unless specified otherwise, all calculations average over $15\,360/N$ randomly generated frozen atomic clouds. Each cloud is given a Gaussian density distribution

$$\mathcal{N}(r) = \frac{N}{\sigma^3 (2\pi)^{3/2}} \exp\left(\frac{-r^2}{2\sigma^2}\right), \quad (13)$$

with an average density \mathcal{N} determined by $\mathcal{N} = N/(4\pi\sigma^2)^{3/2}$.

III. TWO-LEVEL ATOMS

The Dicke model describes two-level atoms [see Fig. 1(a)] radiating from a volume that is small relative to the transition's wavelength λ_g . In this limit, all the atoms radiate from effectively the same position, making their emission in all directions coherent. This dissipative coherence causes the increase in photon emission rate associated with superradiance [1]. In reality, the system is more complex in two important ways: experimentally realizable clouds can be much larger than λ_g and physical clouds undergo elastic dephasing.

A. Finite-size effects

Large and dilute clouds (compared to the Dicke limit) can also superradiate [37,38]. While atoms in such clouds are usually separated by distances larger than λ_g , the emission of successive photons in a particular direction \hat{k}_g projects the cloud onto a quantum state with a diffraction maxima, and therefore coherent radiation, in \hat{k}_g . This causes superradiance [1,33,37]. Ignoring elastic dephasing and invoking a semiclassical approximation, the time dependence of a given cloud can be shown to be [37]

$$\dot{N}_e = -\Gamma_g \{N_e + \boldsymbol{\mu}(k_g\sigma) N_e N_g\}, \quad (14)$$

where $k_g \equiv 2\pi/\lambda_g$, N_g is the expectation value of number of atoms in the ground state ($N_g = N - N_e$), Γ_g is the single-atom decay rate of the g transition, and $\boldsymbol{\mu}(k_g\sigma)$ is a shape parameter, which for a cloud of \hat{x} polarized two-level atoms is given by

$$\boldsymbol{\mu}(k_g\sigma) = \frac{3}{8\pi N^2} \int d\Omega_k \{1 - (\hat{k} \cdot \hat{x})^2\} \sum_{m \neq n} e^{ik_g(\hat{k} - \hat{k}_g) \cdot (\vec{r}_m - \vec{r}_n)}, \quad (15)$$

where \hat{k}_g is the direction of the diffraction maxima of the radiation. This equation shows that $\boldsymbol{\mu}(k_g\sigma)$ is determined by the diffraction pattern of the cloud's emission [37]. Solving this nonlinear differential equation for the time dependence of the cloud's photon emission rate $\gamma(t)$ yields

$$\gamma(t) = \frac{N\Gamma_g [1 + N\boldsymbol{\mu}(k_g\sigma)]^2 e^{\Gamma_g t [1 + N\boldsymbol{\mu}(k_g\sigma)]}}{[N\boldsymbol{\mu}(k_g\sigma) + e^{\Gamma_g t [1 + N\boldsymbol{\mu}(k_g\sigma)]}]^2}, \quad (16)$$

which reaches a radiative maximum after a time delay t_d equal to

$$t_d = \frac{\ln[N\mu(k_g\sigma)]}{\Gamma_g[1 + N\mu(k_g\sigma)]}. \quad (17)$$

This equation may be applied to the present system, a spherically symmetric Gaussian cloud, by converting the discrete sums in Eq. (15) to integrals, assuming $\hat{\mathbf{k}}_g = \hat{\mathbf{z}}$. Performing the integrals over both $\hat{\mathbf{k}}$ and the atomic positions yields

$$\mu(k_g\sigma) = \frac{3}{32k_g^6\sigma^6} \left\{ 1 - 2k_g^2\sigma^2 + 4k_g^4\sigma^4 - e^{-4k_g^2\sigma^2} (1 + 2k_g^2\sigma^2 + 4k_g^4\sigma^4) \right\}. \quad (18)$$

In the limit $k_g\sigma \rightarrow \infty$, $\mu(k_g\sigma) \rightarrow \frac{3}{8k_g^2\sigma^2}$. This agrees with recent results that show the collective enhancement to the decay rate of a large, singly excited, and dilute atomic cloud is $\frac{3(N-1)\Gamma_g}{8k_g^2\sigma^2}$ [4]. Conversely, in the small cloud ($k_g\sigma \rightarrow 0$) limit, $\mu(k_g\sigma) \rightarrow 1$, which reduces the more general equation (14) to the equation derived by Dicke [1].

Equation (16) is a reasonable approximation when dephasing due to elastic interactions can be ignored. This statement is made apparent by comparing Eq. (16) to Eq. (11) when $g_{mn}^\alpha \rightarrow \Gamma_{mn}^\alpha/2$, thus artificially keeping only the inelastic part of each dipole-dipole interaction. Since one of the key features of an initially inverted superradiating cloud is an increase in photon emission, the maximum photon emission rate $\gamma(t_d)$ is used to quantify the ‘‘amount’’ of superradiance in a given cloud. Figure 3 compares the two calculations by showing the maximum photon emission rate per atom $\gamma'_{\max} \equiv \gamma(t_d)/N\Gamma_g$ versus $1/\lambda_g\mathcal{N}^{1/3}$ when $N = 160$. As the value of $\lambda_g^3\mathcal{N}$ increases, γ'_{\max} increases as well. This increase of γ'_{\max} with \mathcal{N} may be understood by considering the diffraction pattern of a cloud that has emitted a series of photons in a particular direction $\hat{\mathbf{k}}$. As the value of $\lambda_g^3\mathcal{N}$ increases, the size of the atomic cloud decreases. The result of this is that $\mu(k_g\sigma)$ increases due to the broadening of the diffraction maxima centered at $\hat{\mathbf{k}}$. As the size of the cloud decreases, photons can radiate coherently into more solid angles, until finally the Dicke limit is reached and photons are coherent in all directions [$\mu(k_g\sigma) \rightarrow 1$]. This is shown for both calculations in Fig. 3, when the value of γ'_{\max} increases towards a constant, as $1/\lambda_g\mathcal{N}^{1/3}$ decreases towards 0. The quantitative agreement shown in the two simulations is a good indication of the usefulness of Eq. (16) when elastic interactions are neglected. However, this is often not valid.

B. Dephasing due to elastic dipole-dipole interactions

The seminal work of Dicke ignores the off-resonant, virtual photon exchanges that lead to elastic dipole-dipole interactions. In dense clouds, such as the ones described by Dicke, elastic interactions cause large and random energy shifts and can lead the system to dephase on time scales much shorter than its collective decay rate [28,29]. This has been described semiclassically [28], as well as numerically for small values of N (i.e., $N = 3-10$) [33,39]. In this section, Eq. (11) is used to simulate clouds containing up to 640 initially inverted

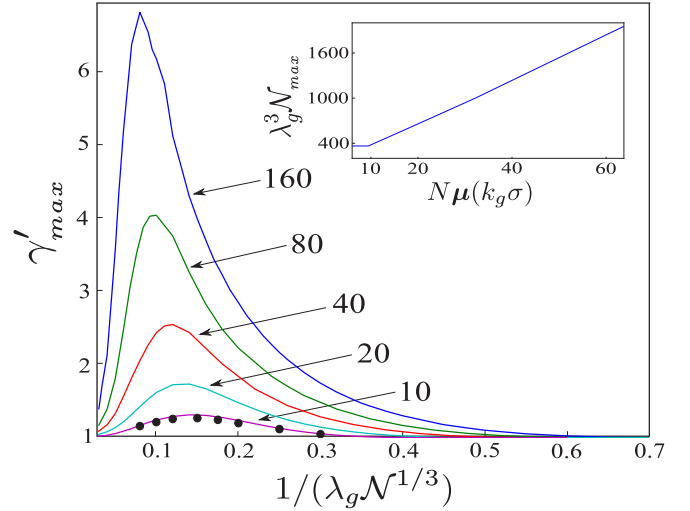


FIG. 4. Equation (11) is used to calculate the maximum photon emission rate divided by the number of atoms N times the single-atom decay rate Γ_g [$\gamma'_{\max} \equiv \gamma(t_d)/N\Gamma_g$] versus $1/\lambda_g\mathcal{N}^{1/3}$. This is done for clouds such that $N = 10, 20, 40, 80$, and 160 . As $1/\lambda_g\mathcal{N}^{1/3}$ decreases, at first γ'_{\max} increases, due to the broadening of the diffraction maxima. However, for every value of N there is a certain $\lambda_g^3\mathcal{N}$ where the large elastic dipole-dipole interactions begin to dominate and the value of γ'_{\max} starts to decrease rapidly. The inset shows that the value of $\lambda_g^3\mathcal{N}$ such that superradiance is at a maximum $\lambda_g^3\mathcal{N}_{\max}$ increases linearly with $N\mu(k_g\sigma)$ due to the collective enhancement to the decay rate. Note that in the main figure, the black dots represent the calculations for ten atom clouds using Eq. (1).

atoms. This enables the exploration of the fundamental limits that elastic dipole-dipole interactions have on superradiance. For a given atomic cloud, the calculations presented in this section place strong restrictions on the parameters that can lead to significant superradiant buildup. As will be shown in Sec. V, this has important implications on the Rydberg-atom problem.

The relevant quantity when determining the dephasing rate of a specific atomic cloud is $\lambda_g^3\mathcal{N}$. In Fig. 4, Eq. (11) is solved in order to demonstrate how γ'_{\max} for a particular transition depends on N and $1/\mathcal{N}^{1/3}\lambda_g$. In Fig. 4, γ'_{\max} is shown for clouds such that $N = 10, 20, 40, 80$, and 160 . There are several important effects visible here. First, increasing \mathcal{N} in dilute clouds causes an increase in γ'_{\max} . This is because in dilute clouds elastic dephasing is slow relative to the collective decay of the cloud. Therefore, little dephasing occurs within t_d . Thus decreasing the cloud size simply increases the directional coherence [the value of $\mu(k_g\sigma)$] discussed in Sec. III A. As one increases $\lambda_g^3\mathcal{N}$, however, the dephasing rate due to elastic interactions [Eq. (3)] grows linearly, while the radiative enhancement due to inelastic interactions [Eq. (5)] approaches a constant value ($\Gamma_g/2$). Therefore, in dense clouds the system dephases significantly before t_d and the value of γ'_{\max} begins to diminish proportionally to $\lambda_g^3\mathcal{N}$. This is shown in Fig. 4, where γ'_{\max} increases as $1/\lambda_g\mathcal{N}^{1/3}$ decreases for dilute clouds, followed by a rapid decrease as $1/\lambda_g\mathcal{N}^{1/3} \rightarrow 0$. Due to computational limitations, the largest value of $\lambda_g^3\mathcal{N}$ in Fig. 4 is 37 037; however, the values of γ'_{\max} do seem to approach 0 for increasingly dense clouds. This is in contrast to Fig. 3,

where there is no elastic dephasing. Here, as clouds condense the value of γ'_{\max} increases to a constant with approximately 6 times the maximum values of γ'_{\max} shown in Fig. 4. In order to demonstrate the accuracy of our approximate simulations, Fig. 4 compares the photon emission maxima for ten atom clouds using both Eqs. (1) and (11). Note that for a given density, there is a narrow range of λ_g where superradiance maximizes.

Figure 4 shows that for clouds with more atoms, the value of $\lambda_g^3 \mathcal{N}$ with the largest value of γ'_{\max} , $\lambda_g^3 \mathcal{N}_{\max}$, increases. This is because the collective decay rate of a cloud increases proportionally to $N\mu(k_g\sigma)$, while the dephasing rate of a dense cloud increases proportionally to $\lambda_g^3 \mathcal{N}$. Assuming that $\lambda_g^3 \mathcal{N}_{\max}$ occurs when the two rates are equal, up to some constant, $\lambda_g^3 \mathcal{N}_{\max}$ should increase linearly with $N\mu(k_g\sigma)$. This increase of \mathcal{N}_{\max} with $N\mu(k_g\sigma)$ is shown in the inset of Fig. 4.

In the single-excitation regime, it has been demonstrated that large elastic interactions produce negligible effects when clouds are sufficiently dilute. This enables relatively straightforward analytic treatments that agree well with the exact numerical results [4,11,20,40]. For more dense clouds, however, the numerical results begin to deviate from the analytic ones [4,11]. Figure 5 shows that clouds of initially inverted atoms are similar in this respect. As shown in Fig. 5(a), for initially inverted and dilute clouds, Eq. (16) gives similar results to the full calculation of Eq. (11). For lower values of $\lambda_g^3 \mathcal{N}$, the numerical calculation of γ'_{\max} grows with N in a similar manner to Eq. (16). For more dense clouds, the results are very different. When comparing Figs. 5(b) and 5(c), we see that the presence of large elastic dipole-dipole interactions significantly decreases the rate at which γ'_{\max} grows with N . Counterintuitively, in clouds where elastic dephasing is important, such as in Fig. 5(c), the slope of γ'_{\max} increases with N . This is because the larger the value of $N\mu(k_g\sigma)$, the sooner t_d occurs, allowing a cloud less time to dephase before it decays significantly.

C. Parallel with classically radiating dipoles

There is a notable parallel between the physics of a cloud of two-level atoms and that of a cloud of coupled harmonic oscillators. In matrix form, the set of equations that describes coupled harmonic oscillators is given by

$$\dot{\vec{a}} = -\underline{G}\vec{a}, \quad (19)$$

where each element of the vector \vec{a} represents the complex amplitude of a specific oscillator. The matrix elements of the complex symmetric matrix \underline{G} are given by

$$G_{mn} \equiv \frac{\Gamma_{mn}^g}{2} + if_{mn}^g(1 - \delta_{mn}). \quad (20)$$

The eigenvalues of \underline{G} often have important physical significance [5,9,41–43], where the real part of an eigenvalue corresponds to half of that eigenmode's decay rate and the imaginary part corresponds to its energy shift, often called the collective or cooperative Lamb shift. This section will be concerned with each eigenmode's decay rate Γ_j defined by the equation

$$\underline{G}\vec{a}_j = \left(\frac{\Gamma_j}{2} + i\epsilon_j \right) \vec{a}_j. \quad (21)$$

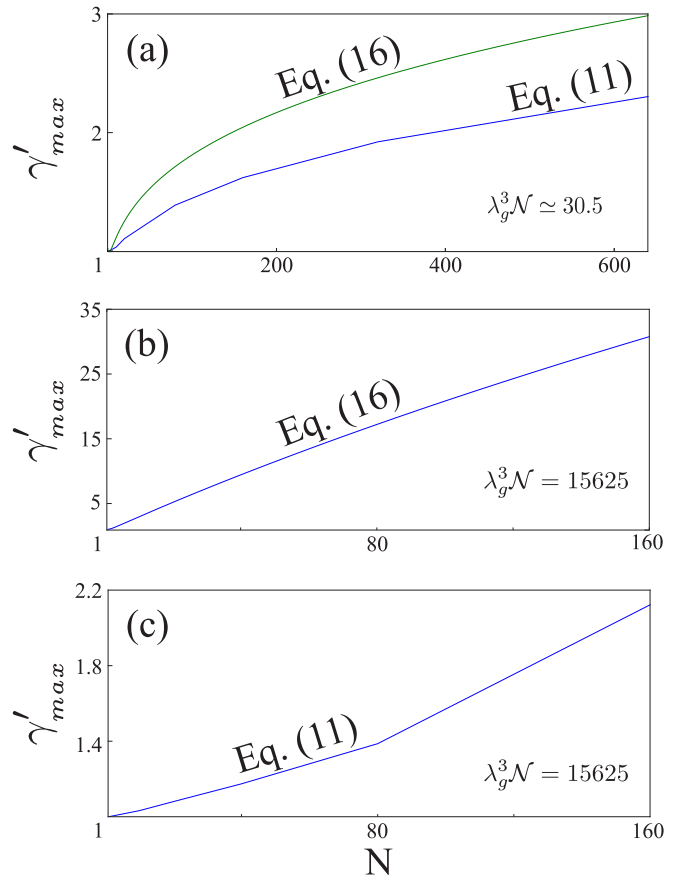


FIG. 5. For clouds with a given density \mathcal{N} , this figure shows the maximum photon emission rate per atom γ'_{\max} versus the number of atoms N . (a) For dilute clouds, where elastic dipole-dipole interactions may be ignored, the analytic results of Eq. (16) are similar to the full numerical treatment of Eq. (11). Here a cloud with $\mathcal{N} = 30.5/\lambda_g^3$ is shown. Note that for both calculations, the slope of γ'_{\max} versus N decreases at larger N . This is due to the diffractive coherence as described in the text. For more dense clouds where $\mathcal{N} = 15625/\lambda_g^3$, (b) shows the analytic results given by Eq. (16) and (c) shows the full numerical results obtained by solving Eq. (11). Here the presence of large elastic dipole-dipole interactions in (c) causes the two calculations to notably deviate.

In the original Dicke model, when a cloud decays, it cascades through a set of states with a specific cooperation number. For an initially inverted cloud of atoms, the cloud cascades through the most superradiant states (cooperation number equal to $N/2$) until it reaches the ground state [1]. Since the systems investigated in this paper are initially inverted, we imagine a physical situation where the atomic cloud in question has decayed into the “most” superradiant singly excited eigenmode, as a parallel to the results of Fig. 4.

In Fig. 6 the maximum value of Γ_j , (Γ_{\max}), averaged over $1.6 \times 10^5/N$ runs, is shown for clouds where $N = 10, 20, 40, 80$, and 160. More configurations are averaged here than in the rest of the paper, since only one data point from each run is kept. Figure 6 shows a pattern that is remarkably similar to Fig. 4. At low densities, $\langle \Gamma_{\max} \rangle$ increases with $\lambda_g^3 \mathcal{N}$ followed by a sharp decrease as the clouds become condensed. Also, as shown in the inset of Fig. 6, for every cloud with

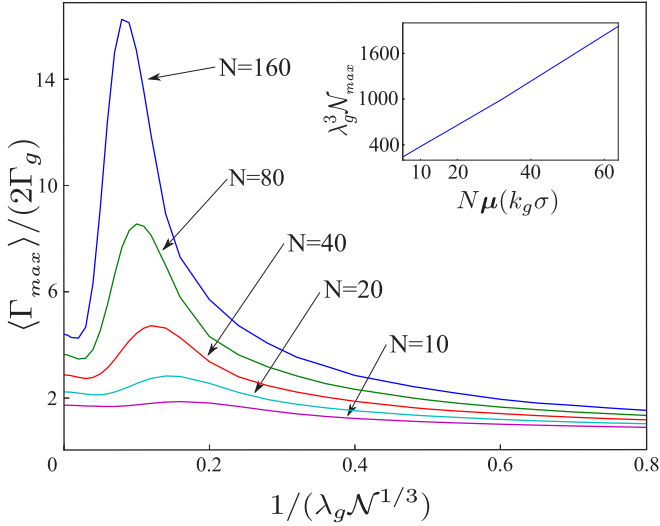


FIG. 6. Average value of the decay rate of the most superradiant eigenmode $\langle \Gamma_{\max} \rangle$ in clouds such that $N = 10, 20, 40, 80$, and 160 . The inset shows the value of $\lambda_g^3 \mathcal{N}_{\max}$ such that $\langle \Gamma_{\max} \rangle$ is at a maximum $\lambda_g^3 \mathcal{N}_{\max}$.

more than ten atoms, the value of $\lambda_g^3 \mathcal{N}_{\max}$ is equivalent to its corresponding value in the inset of Fig. 4. Similar to a cascade of initially inverted atoms, there is competition between the increasingly symmetric inelastic interactions [Eq. (5)] in \mathcal{G} and the highly disordered and increasingly large elastic dipole-dipole interactions [Eq. (3)]. Note that the values of $\langle \Gamma_{\max} \rangle$ in Fig. 6 do not approach 0 as $1/\lambda_g \mathcal{N}^{1/3}$ approaches 0. This is likely due to the fact that the eigenmodes in highly dense clouds become localized over several atoms [44].

IV. THREE-LEVEL ATOMS: MULTIPLE DECAY CHANNELS

Two-level systems, in many respects, are the best possible scenario for maximizing the effects of superradiance. Realistically, superradiance experiments typically involve populating an excited state that can decay via multiple transitions. These transitions then “compete” for the buildup in cooperativity that results in superradiance. As an example, a Rydberg-like system [see Fig. 1(b)] of an excited state that can decay into a high-lying Rydberg state a as well as a low-lying ground state g is considered. For typical Rydberg systems $\lambda_a \gg \lambda_g$. Since Rydberg experiments are usually conducted for values of \mathcal{N} such that $\lambda_g^3 \mathcal{N} \ll 1$, setting $\Gamma_{ij}^g = 0$ and $f_{ij}^g = 0$ is valid. This is *not* the case for transition a , where in many experimental setups $\lambda_a^3 \mathcal{N} \gg 1$. Despite this potential for cooperative behavior, the presence of an alternate decay route significantly dampens the buildup of superradiance in the a transition.

The qualitative physics studied here can be gleaned by examining the two linearly independent equations that correspond to Eq. (14) for the three-level system described here:

$$\begin{aligned} \dot{N}_e &= -(\Gamma_g + \Gamma_a)N_e - \Gamma_a \mu(k_a \sigma) N_e N_a, \\ \dot{N}_a &= \Gamma_a N_e + \Gamma_a \mu(k_a \sigma) N_e N_a, \end{aligned} \quad (22)$$

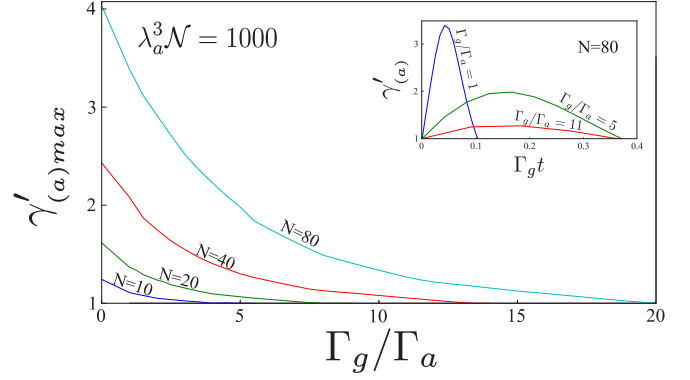


FIG. 7. Equation (11) is used to calculate the maximum photon emission rate per atom for transition a divided by Γ_a , $\gamma'_{(a)\max}$, versus Γ_g / Γ_a . This is shown for clouds such that $\mathcal{N} = 1000/\lambda_a^3$ and $N = 10, 20, 40$, and 80 . For every value of N shown, $\gamma'_{(a)\max}$ decreases as the relative decay rate into state g increases. The inset shows the temporal dependence of $\gamma'_{(a)max} / \Gamma_a$. Note that when Γ_g / Γ_a increases, t_d increases.

where $k_a \equiv 2\pi/\lambda_a$. Note that $N = N_g + N_a + N_e$ and $0 = \dot{N}_g + \dot{N}_a + \dot{N}_e$. Since transition a can potentially superradiate, one may imagine that if $N \mu(k_a \sigma) \Gamma_a > \Gamma_g$, then the a transition should dominate the g transition. However, this is often not the case since the superradiant enhancement to \dot{N}_a is proportional to the number of decays via transition a (N_a). In Rydberg systems, Γ_a / Γ_g is a small value. Therefore, until $\Gamma_a \mu(k_a \sigma) N_a \sim \Gamma_g$, \dot{N}_a will be smaller than \dot{N}_g . Often the entire system will decay before this occurs, preventing any significant superradiant enhancement to the transition a .

The superradiant enhancement to the decay rate is illustrated through value of γ' for transition a , $\gamma'_{(a)}$. Figure 7 shows $\gamma'_{(a)\max}$ versus Γ_g / Γ_a calculated using Eq. (11). Here the presence of an alternate decay channel quells superradiant behavior. This is seen in the fact that when the value of Γ_g / Γ_a is increased, a decrease in $\gamma'_{(a)\max}$ follows. As shown in Fig. 7, for clouds with larger values of N , the system is progressively more resistant to decay into state g . This is because clouds consisting of more atoms must radiate more photons before all atoms reach the ground state. This provides more opportunities for the system to decay into state a . When the system has decayed sufficiently into state a , such that $N_a \mu(k_a \sigma) \Gamma_a \gg \Gamma_g$, the presence of transition g becomes unimportant. This means that alternate decay paths are less relevant for clouds with more atoms. However, in many Rydberg-atom schemes $\Gamma_g / \Gamma_a \sim 50$, making this mechanism likely to be at least quantitatively important. Since the much simpler equation (22) includes the above physics, the qualitative features of Fig. 7 can be replicated using this equation; however, elastic dephasing dampens the results by a factor of approximately 2. We also note that the larger the value of Γ_g / Γ_a is, the more accurate Eq. (11) becomes. This is because the terms that are approximately factorized in Eq. (11) are smaller when less population decays via channel a .

As far as the superradiant enhancement to transition a is concerned, the process of atoms decaying via an alternate decay route is similar to removing atoms from the system. Resultantly, the temporal dependence of the transition a for larger values of Γ_g / Γ_a is like that of a two-level system with

less atoms. This can be seen in the inset of Fig. 7. Note that similar to clouds of two-level atoms [see Eq. (17)], t_d increases for larger values of Γ_g/Γ_a .

V. FOUR-LEVEL ATOMS: COMPETING SUPERRADIANT CHANNELS

In Rydberg-atom experiments, there are multiple potentially superradiant transitions that compete with each other. To properly explore this, an additional transition to an upper-lying Rydberg state b is added to the system of the preceding section [see Fig. 1(c)]. This allows simulations of more realistic Rydberg systems. Here the development of superradiance in a particular transition competes not only with the decay to state g , as described in the preceding section, but also with another superradiating channel. For an isolated atom, the competition between multiple transitions can be summarized, straightforwardly, by the branching ratios of those transitions. These branching ratios are determined by the single-atom decay rates of the system. When an ensemble of atoms radiates coherently, however, the competition between transitions is more complex. As will be shown, when considering the competition between superradiating transitions in a cloud, there are two important parameters: the single-atom decay rates and the relative densities for each transition (i.e., $\lambda_\alpha^3 \mathcal{N}$).

If elastic dephasing is neglected, the superradiant enhancement to a transition is proportional to the number of atoms that have decayed via that transition [see Eq. (14)]. It follows that transitions with larger decay rates will experience more coherent enhancement, simply because they decay more. In Sec. III it was demonstrated that for a given value of $\mathcal{N}^{1/3}$ there is a very narrow range in λ_α such that transition α can develop strong superradiant character. This is because the superradiant enhancement to transition α is limited by diffraction if $\lambda_\alpha \mathcal{N}^{1/3}$ is too small and by elastic dephasing if $\lambda_\alpha \mathcal{N}^{1/3}$ is too large. Resultantly, a given Rydberg state will have only a small number of transitions with the potential to develop significant superradiant behavior. This differs from previous treatments ignoring elastic dephasing, since they argue that transitions with the largest values of λ_α always show the most superradiant enhancement [13,37].

These effects are made apparent in Fig. 8. So as to obtain experimentally relevant results, Eq. (11) is solved using values of Γ_α and λ_α calculated for specific transitions of Rb. For the calculations of Fig. 8, $\Gamma_a = 169 \text{ s}^{-1}$ and $\lambda_a = 1.134 \times 10^{-3} \text{ m}$ corresponding to the $26p \rightarrow 26s$ transition, while $\Gamma_b = 80.8 \text{ s}^{-1}$ and $\lambda_b = 3.51 \times 10^{-4} \text{ m}$ corresponding to the $26p \rightarrow 25s$ transition. Finally, the numbers for transition g correspond to the $26p \rightarrow 5s$ transition, where $\Gamma_g = 3.5 \times 10^3 \text{ s}^{-1}$ and λ_g is negligibly small.

In Fig. 8 the value of N_a/N_b versus time allows one to observe the temporal behavior of the two transitions' collective decay rates. Initially, $N_a/N_b = \Gamma_a/\Gamma_b$ because superradiant behavior has not developed yet. As the system begins to decay however, this ratio tends towards the transition experiencing the most collective enhancement. For example, Fig. 8(a) shows that for lower-density clouds $\mathcal{N} = 1000/\lambda_a^3 \simeq 29.65/\lambda_b^3$, superradiant behavior develops the most in transition a . This occurs in part because $\Gamma_a > \Gamma_b$. Also, since $\lambda_a^3 \mathcal{N}$ is not large enough for elastic dephasing to be important, the fact

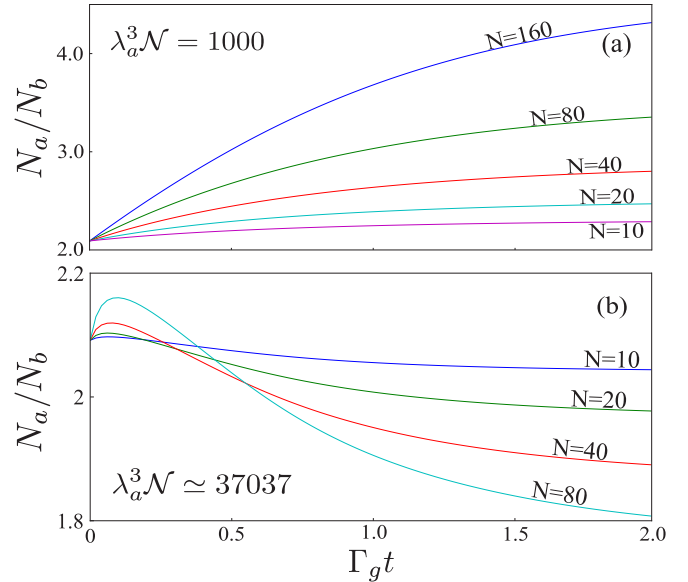


FIG. 8. An atomic cloud is placed in a Rydberg state e that subsequently decays into three states: a , b , and g . The values of Γ_α and λ_α for each transition are given in the text. Only transitions to states a and b experience dipole-dipole interactions. In both (a) and (b) the competition between the two transitions' superradiant behavior is illustrated by the ratio of the population in states a and b , N_a/N_b . This is calculated using Eq. (11). (a) N_a/N_b versus time for clouds such that $\mathcal{N} = 1000/\lambda_a^3$. For more dilute clouds, the dephasing rate for both transitions is relatively low, causing the enhancement to the a transition's decay rate to grow with N faster than the b transition's enhancement. (b) N_a/N_b versus time for $\mathcal{N} \simeq 37037/\lambda_a^3$. Initially, the coherent enhancement to the a transition's decay rate is stronger than the b transition's enhancement. However, the elastic dipole-dipole interactions are much larger for the a transition than for the b transition. This causes the a transition to quickly dephase, while the coherent enhancement to the b transition's decay rate continues to build with N .

that $\mu(k_a\sigma) > \mu(k_b\sigma)$ causes the superradiant development to favor transition a . Therefore, for more dilute clouds, as N is increased, the system tends to decay more into state a . This indicates that at this density, for clouds with $N \sim 10^4$, such as those of recent experiments [12,13,31], the a transition is likely to dominate.

Conversely, Fig. 8(b) shows that for more condensed clouds $\mathcal{N} \simeq 37037/\lambda_a^3 \simeq 1098.3/\lambda_b^3$, elastic dephasing can be fast enough to significantly diminish superradiance in one transition while still allowing superradiance to build in another. Here we can see that even though $\Gamma_a > \Gamma_b$ and $\mu(k_a\sigma) > \mu(k_b\sigma)$, at longer times N_a/N_b decreases with N . Earlier in the evolution, N_a/N_b in Fig. 8(b) grows in a similar manner to Fig. 8(a) both because $\Gamma_a > \Gamma_b$ and because $\mu(k_a\sigma) > \mu(k_b\sigma)$. However, the elastic dephasing rate is significantly larger for transition a than for transition b . Resultantly, later in the cloud's evolution, elastic dephasing causes the buildup of superradiance in transition a to diminish, which in turn allows the collective behavior to favor transition b .

It is probable that for clouds with enough atoms, transition a will likely dominate again. This is because, as is shown in the

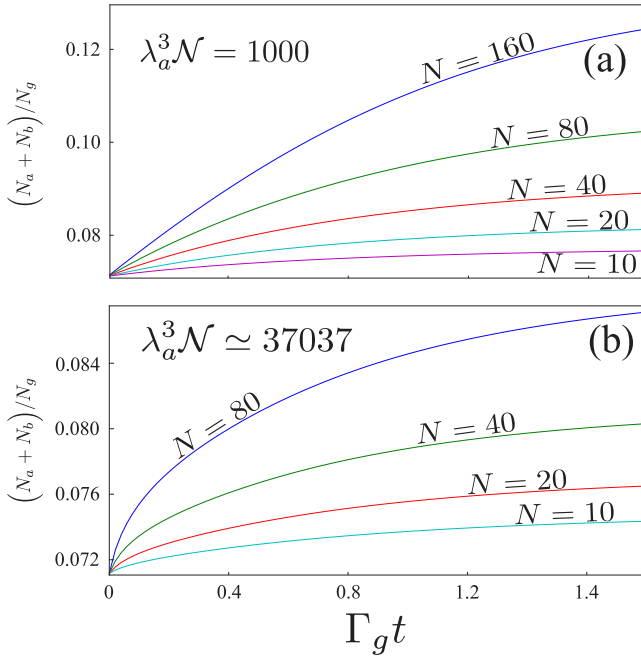


FIG. 9. Number of atoms in a cloud that have decayed into either of the two Rydberg states compared to the number of atoms that have decayed into the ground state $(N_a + N_b)/N_g$. This is shown for clouds with various numbers of atoms N such that (a) $\lambda_\alpha^3 \mathcal{N} = 1000$ and (b) $\lambda_\alpha^3 \mathcal{N} = 37037$. Note that for every cloud shown, only a very small fraction of the population actually decays into the Rydberg states. For the reasons argued in Sec. IV, this diminishes the cooperative behavior of the cloud. This is calculated using Eq. (11).

inset of Fig. 4, the value of $\lambda_\alpha^3 \mathcal{N}_{\max}$ increases with N . If a given cloud contained enough atoms such that $\lambda_\alpha^3 \mathcal{N}_{\max} \simeq 37037$, then transition a would likely reemerge as the dominant superradiating transition at all times. Traces of this are visible in Fig. 8(b), where for clouds with larger values of N , N_a/N_b increases for slightly longer periods of time before elastic dephasing decimates it. If a cloud reaches the point where the entire system decays before elastic dipole-dipole interactions can significantly dephase transition a , then it will likely dominate the cascade.

Finally, one must consider the decay to state g in order to fully understand what is occurring in Fig. 8. For reasons argued in Sec. IV, the fact that $\Gamma_g/\Gamma_a \simeq 21$ and $\Gamma_g/\Gamma_b \simeq 43$ suggests that the decay via the g transition strongly suppresses the cooperative behavior in Fig. 8. This is illustrated concretely in Fig. 9, where it is shown that for even the most superradiant cloud in Fig. 8, less than 15% of the population decays to either of the two Rydberg states. This shows that for the values of N that are currently computationally feasible, the superradiant behavior of a system is dominated by the decay to the ground state. As was argued in Sec IV, for clouds with significantly more atoms this effect will be less important.

VI. CONCLUSION

This work consisted of the development and implementation of a robust set of differential equations that can be used to study superradiance in ensembles of initially inverted atoms.

This set of equations incorporated the dephasing due to elastic dipole-dipole interactions present in dense atomic clouds and reduced the calculation so that 100 s of multilevel atoms could be simulated. Note that, unlike some recent experiments [14], the superradiant cascades studied here were not triggered. Rydberg-like systems were studied so that two fundamentally different effects could be examined. Section III focused on dephasing due to the elastic part of the dipole-dipole interaction. Here we found that because the elastic dephasing rate of a given transition is proportional to $\lambda_\alpha^3 \mathcal{N}$, where \mathcal{N} is the average density for a given cloud, there is a narrow range of λ_α such that superradiance can develop significantly. Further, in Sec. IV it was shown that the presence of an alternate decay channel also suppresses the buildup of superradiance. In Sec. V both of these mechanisms were incorporated into one four-level system. Here the competition between multiple superradiant transitions was studied. Further, it was argued that which transition develops the strongest superradiant behavior depends on the values of N , Γ_α , and λ_α for the system.

The parametrical dependence of a transition's potential to superradiate, described in this work, may provide a starting point for an explanation of why some experiments observe superradiance and some do not. For example, the observations in [12] were conducted for clouds where $\mathcal{N} \sim 10^7 \text{ cm}^{-3}$, while in [31] they were conducted at $\mathcal{N} \sim 10^9 \text{ cm}^{-3}$. If elastic dephasing were not present, this two-order-of-magnitude difference in \mathcal{N} would not have a tremendous effect, since the high-lying transitions from an initial Rydberg state are all in the Dicke regime. When elastic dephasing is considered, however, the range of $\lambda_\alpha \mathcal{N}^{1/3}$ that can superradiate is significantly narrowed, meaning that the specific value of \mathcal{N} for an experiment is extremely important. For transitions from high-lying Rydberg states to nearby Rydberg states, the value of Γ_α decreases sharply with the difference in principle quantum number, due to the smaller dipole moment for those transitions. However, Γ_α for transitions to low-lying states can be two orders of magnitude larger than the Rydberg transitions, due to the fact that $\Gamma_\alpha \propto \omega_\alpha^3$ [45]. Therefore, it is possible that for very dense clouds, the Rydberg transitions with the largest values of Γ_α are prevented from superradiating by elastic dephasing (see Sec. III), while decay rates to lower Rydberg states are prevented by the competition between those transitions and the transitions to the ground state (see Sec. IV). For more dilute clouds, however, transitions to nearby Rydberg states will undergo significantly less elastic dephasing and will therefore be much more likely to superradiate. This could be relevant to elucidating the discrepancies currently present in experiments [12–14,31].

The diversity of the transitions available in Rydberg atoms implies that they have tremendous potential for studying superradiance. Nevertheless, quantitatively predicting the superradiant decay in a Rydberg cloud is a daunting task. Certain sophisticated approaches to doing this have been conducted [13]; however, these approaches do not incorporate elastic dephasing. This work fills that gap. However, there is clearly a need for further experimental and theoretical developments that provide the community with much needed insights into Rydberg atoms, and superradiance in general.

ACKNOWLEDGMENT

This material is based upon work supported by the National Science Foundation under Grant No. 1404419-PHY.

APPENDIX

Using $g_{ij}^\alpha \equiv if_{ij}^\alpha + \Gamma_{ij}^\alpha/2$, Eq. (1) may be rewritten as

$$\begin{aligned} \dot{\hat{\rho}} = & \sum_{\alpha} \Gamma_{\alpha} \sum_j \left\{ b_j^{\alpha-} \hat{\rho} b_j^{\alpha+} - \frac{1}{2} b_j^{\alpha+} b_j^{\alpha-} \hat{\rho} - \frac{1}{2} \hat{\rho} b_j^{\alpha+} b_j^{\alpha-} \right\} \\ & + \sum_{\alpha} \sum_{i \neq j} \left\{ 2 \operatorname{Re}(g_{ij}^{\alpha}) b_j^{\alpha-} \hat{\rho} b_i^{\alpha+} - g_{ij}^{\alpha} b_i^{\alpha+} b_j^{\alpha-} \hat{\rho} \right. \\ & \left. - g_{ij}^{\alpha*} \hat{\rho} b_i^{\alpha+} b_j^{\alpha-} \right\}. \end{aligned} \quad (\text{A1})$$

First, we solve for the time dependence of the operators representing the probability of atom i being in the state α , $\langle b_i^{\alpha-} b_i^{\alpha+} \rangle$, by substituting this into Eq. (8). Note that for this appendix, we treat the one- and two-atom terms in Eq. (A1) separately, adding them together in the end. Here the single-atom terms give

$$\begin{aligned} \operatorname{Tr} \left\{ b_m^{\alpha-} b_m^{\alpha+} \sum_{\beta} \Gamma_{\beta} \sum_j \left(b_j^{\beta-} \hat{\rho} b_j^{\beta+} - \frac{1}{2} b_j^{\beta+} b_j^{\beta-} \hat{\rho} \right. \right. \\ \left. \left. - \frac{1}{2} \hat{\rho} b_j^{\beta+} b_j^{\beta-} \right) \right\}. \end{aligned} \quad (\text{A2})$$

The terms in this sum, such that $m \neq j$ or $\alpha \neq \beta$, will be equal to zero. This gives

$$\begin{aligned} \Gamma_{\alpha} \left\{ \langle b_m^{\alpha+} b_m^{\alpha-} b_m^{\alpha+} b_m^{\alpha-} \rangle - \frac{1}{2} \langle b_m^{\alpha-} b_m^{\alpha+} b_m^{\alpha+} b_m^{\alpha-} \rangle \right. \\ \left. - \frac{1}{2} \langle b_m^{\alpha+} b_m^{\alpha-} b_m^{\alpha-} b_m^{\alpha+} \rangle \right\}. \end{aligned} \quad (\text{A3})$$

Incorporating the fact that any operator proportional to $b_m^{\alpha+} b_m^{\alpha+}$ or proportional to $b_m^{\alpha-} b_m^{\alpha-}$ is 0, that $b_m^{\alpha+} b_m^{\alpha-} b_m^{\alpha+} b_m^{\alpha-} = b_m^{\alpha+} b_m^{\alpha-}$,

and that $(b_m^{\alpha+} b_m^{\alpha-} + \sum_{\beta} b_m^{\beta-} b_m^{\beta+} = I)$, we obtain

$$\Gamma_{\alpha} \langle b_m^{\alpha+} b_m^{\alpha-} \rangle = \Gamma_{\alpha} \left\{ 1 - \sum_{\beta} \langle b_m^{\beta-} b_m^{\beta+} \rangle \right\}. \quad (\text{A4})$$

When considering the two-atom terms, the only nonzero contributions will occur when $\alpha = \beta$ and $m = i$ or j . This gives

$$\begin{aligned} \sum_{j \neq m} g_{mj}^{\alpha} \langle b_j^{\alpha-} b_m^{\alpha+} \rangle + \sum_{i \neq m} g_{im}^{\alpha*} \langle b_m^{\alpha-} b_i^{\alpha+} \rangle \\ = 2 \sum_{i \neq m} \operatorname{Re} \{ g_{mi}^{\alpha} \langle b_i^{\alpha-} b_m^{\alpha+} \rangle \}. \end{aligned} \quad (\text{A5})$$

Adding these two terms together gives

$$\begin{aligned} \frac{d}{dt} \langle b_m^{\alpha-} b_m^{\alpha+} \rangle = \Gamma_{\alpha} \left\{ 1 - \sum_{\beta} \langle b_m^{\beta-} b_m^{\beta+} \rangle \right\} \\ + 2 \sum_{i \neq m} \operatorname{Re} \{ g_{mi}^{\alpha} \langle b_i^{\alpha-} b_m^{\alpha+} \rangle \}. \end{aligned} \quad (\text{A6})$$

Next we solve for $\frac{d}{dt} \langle b_n^{\alpha-} b_m^{\alpha+} \rangle$. Plugging $b_n^{\alpha-} b_m^{\alpha+}$ into the single-atom terms in Eq. (A1), we find that the only nonzero terms occur when $m = j$ or $n = j$. This gives

$$- \langle b_n^{\alpha-} b_m^{\alpha+} \rangle \sum_{\beta} \Gamma_{\beta}. \quad (\text{A7})$$

Because $[b_m^{\alpha- (+)}, b_n^{\alpha- (+)}] = 0$ when $m \neq n$, when considering the two-atom parts of Eq. (A1), the only terms that are potentially nonzero occur when

- (i) $i = mj = n$, (ii) $i = nj = m$,
- (iii) $i = mj \neq n$, (iv) $i \neq mj = n$,
- (v) $i \neq nj = m$, (vi) $i = nj \neq m$.

Here we calculate each term individually, noting that

$$\frac{d}{dt} \langle b_n^{\alpha-} b_m^{\alpha+} \rangle = (\text{i}) + (\text{ii}) + (\text{iii}) + (\text{iv}) + (\text{v}) + (\text{vi}), \quad (\text{A8})$$

$$\begin{aligned} (\text{i}) = \sum_{\beta} 2 \operatorname{Re} \{ g_{mn}^{\beta} \} \left\{ \langle b_m^{\beta+} b_m^{\alpha+} b_n^{\alpha-} b_n^{\beta-} \rangle - g_{mn}^{\beta} \langle b_m^{\alpha+} b_n^{\alpha-} b_m^{\beta+} b_n^{\beta-} \rangle - g_{mn}^{\beta*} \langle b_m^{\beta+} b_n^{\beta-} b_m^{\alpha+} b_n^{\alpha-} \rangle \right\} \\ = 0, \end{aligned} \quad (\text{A9})$$

$$\begin{aligned} (\text{ii}) = \sum_{\beta} 2 \operatorname{Re} \{ g_{nm}^{\beta} \} \left\{ \langle b_n^{\beta+} b_n^{\alpha-} b_m^{\alpha+} b_m^{\beta-} \rangle - g_{nm}^{\beta} \langle b_n^{\alpha-} b_n^{\beta+} b_m^{\alpha+} b_m^{\beta-} \rangle - g_{nm}^{\beta*} \langle b_m^{\beta-} b_m^{\alpha+} b_n^{\beta+} b_n^{\alpha-} \rangle \right\} \\ = 2 \operatorname{Re} \{ g_{nm}^{\alpha} \} \left\{ \langle b_n^{\alpha+} b_n^{\alpha-} b_m^{\alpha+} b_m^{\alpha-} \rangle - g_{nm}^{\alpha} \langle b_n^{\alpha-} b_n^{\alpha+} b_m^{\alpha+} b_m^{\alpha-} \rangle - g_{nm}^{\alpha*} \langle b_m^{\alpha-} b_m^{\alpha+} b_n^{\alpha+} b_n^{\alpha-} \rangle \right\} \\ = 2 \operatorname{Re} \{ g_{nm}^{\alpha} \} \left\{ \left(\left(I - \sum_{\beta} b_n^{\beta-} b_n^{\beta+} \right) \left(I - \sum_{\beta} b_m^{\beta-} b_m^{\beta+} \right) \right) \right. \\ \left. - g_{nm}^{\alpha} \left\langle b_n^{\alpha-} b_n^{\alpha+} \left(I - \sum_{\beta} b_m^{\beta-} b_m^{\beta+} \right) \right\rangle - g_{nm}^{\alpha*} \left\langle b_m^{\alpha-} b_m^{\alpha+} \left(I - \sum_{\beta} b_n^{\beta-} b_n^{\beta+} \right) \right\rangle \right\}, \\ (\text{iii}) = \sum_{\beta} \sum_{j \neq m, n} 2 \operatorname{Re} \{ g_{mj}^{\beta} \} \left\{ \langle b_m^{\beta+} b_m^{\alpha+} b_n^{\alpha-} b_j^{\beta-} \rangle - g_{mj}^{\beta} \langle b_m^{\alpha+} b_n^{\alpha-} b_m^{\beta+} b_j^{\beta-} \rangle - g_{mj}^{\beta*} \langle b_m^{\beta+} b_j^{\beta-} b_m^{\alpha+} b_n^{\alpha-} \rangle \right\} \\ = 0, \end{aligned} \quad (\text{A10})$$

$$\begin{aligned}
 \text{(iv)} &= \sum_{\beta} \sum_{i \neq m, n} 2 \operatorname{Re} \{ g_{in}^{\beta} \langle b_i^{\beta+} b_m^{\alpha+} b_n^{\alpha-} b_n^{\beta-} \rangle - g_{in}^{\beta} \langle b_m^{\alpha+} b_n^{\alpha-} b_i^{\beta+} b_n^{\beta-} \rangle - g_{in}^{\beta*} \langle b_i^{\beta+} b_n^{\beta-} b_m^{\alpha+} b_n^{\alpha-} \rangle \} \\
 &= 0,
 \end{aligned} \tag{A11}$$

$$\begin{aligned}
 \text{(v)} &= \sum_{\beta} \sum_{i \neq m, n} \left\{ 2 \operatorname{Re} \{ g_{im}^{\beta} \langle b_i^{\beta+} b_n^{\alpha-} b_m^{\alpha+} b_m^{\beta-} \rangle - g_{im}^{\beta} \langle b_m^{\alpha+} b_n^{\alpha-} b_i^{\beta+} b_m^{\beta-} \rangle - g_{im}^{\beta*} \langle b_i^{\beta+} b_m^{\beta-} b_m^{\alpha+} b_n^{\alpha-} \rangle \right\} \\
 &= \sum_{i \neq m, n} \left\{ 2 \operatorname{Re} \{ g_{im}^{\alpha} \langle b_i^{\alpha+} b_n^{\alpha-} b_m^{\alpha+} b_m^{\alpha-} \rangle - g_{im}^{\alpha} \langle b_m^{\alpha+} b_m^{\alpha-} b_n^{\alpha-} b_i^{\alpha+} \rangle - g_{im}^{\alpha*} \langle b_i^{\alpha+} b_n^{\alpha-} b_m^{\alpha-} b_m^{\alpha+} \rangle - \sum_{\beta \neq \alpha} g_{im}^{\beta*} \langle b_i^{\beta+} b_n^{\alpha-} b_m^{\beta-} b_m^{\alpha+} \rangle \right\} \\
 &= \sum_{i \neq m, n} \left\{ g_{im}^{\alpha*} \left\langle b_i^{\alpha+} b_n^{\alpha-} \left(I - b_m^{\alpha-} b_m^{\alpha+} - \sum_{\beta} b_m^{\beta-} b_m^{\beta+} \right) \right\rangle - \sum_{\beta \neq \alpha} g_{im}^{\beta*} \langle b_i^{\beta+} b_n^{\alpha-} b_m^{\beta-} b_m^{\alpha+} \rangle \right\},
 \end{aligned} \tag{A12}$$

$$\begin{aligned}
 \text{(vi)} &= \sum_{\beta} \sum_{j \neq m, n} \left\{ 2 \operatorname{Re} \{ g_{nj}^{\beta} \langle b_m^{\alpha+} b_j^{\beta-} b_n^{\beta+} b_n^{\alpha-} \rangle - g_{nj}^{\beta} \langle b_m^{\alpha+} b_j^{\beta-} b_n^{\alpha-} b_n^{\beta+} \rangle - g_{nj}^{\beta*} \langle b_n^{\beta+} b_n^{\alpha-} b_m^{\alpha+} b_j^{\beta-} \rangle \right\} \\
 &= \sum_{j \neq m, n} \left\{ 2 \operatorname{Re} \{ g_{nj}^{\alpha} \langle b_m^{\alpha+} b_j^{\alpha-} b_n^{\alpha+} b_n^{\alpha-} \rangle - g_{nj}^{\alpha} \langle b_m^{\alpha+} b_j^{\alpha-} b_n^{\alpha-} b_n^{\alpha+} \rangle - g_{nj}^{\alpha*} \langle b_n^{\alpha+} b_n^{\alpha-} b_m^{\alpha+} b_j^{\alpha-} \rangle - \sum_{\beta \neq \alpha} g_{nj}^{\beta} \langle b_m^{\alpha+} b_j^{\beta-} b_n^{\alpha-} b_n^{\beta+} \rangle \right\} \\
 &= \sum_{j \neq m, n} \left\{ g_{nj}^{\alpha} \left\langle b_m^{\alpha+} b_j^{\alpha-} \left(I - b_n^{\alpha-} b_n^{\alpha+} - \sum_{\beta} b_n^{\beta-} b_n^{\beta+} \right) \right\rangle - \sum_{\beta \neq \alpha} g_{nj}^{\beta} \langle b_m^{\alpha+} b_j^{\beta-} b_n^{\alpha-} b_n^{\beta+} \rangle \right\}.
 \end{aligned} \tag{A13}$$

Adding these all together and rearranging commuting terms gives

$$\begin{aligned}
 \frac{d}{dt} \langle b_n^{\alpha-} b_m^{\alpha+} \rangle &= - \langle b_n^{\alpha-} b_m^{\alpha+} \rangle \sum_{\beta} \Gamma_{\beta} + \sum_{j \neq m, n} \left\{ g_{nj}^{\alpha} \left\langle b_j^{\alpha-} b_m^{\alpha+} \left(I - b_n^{\alpha-} b_n^{\alpha+} - \sum_{\beta} b_n^{\beta-} b_n^{\beta+} \right) \right\rangle \right\} \\
 &+ \sum_{j \neq m, n} \left\{ g_{jm}^{\alpha*} \left\langle b_n^{\alpha-} b_j^{\alpha+} \left(I - b_m^{\alpha-} b_m^{\alpha+} - \sum_{\beta} b_m^{\beta-} b_m^{\beta+} \right) \right\rangle \right\} \\
 &- \sum_{\beta \neq \alpha} \sum_{j \neq m, n} g_{nj}^{\beta} \langle b_n^{\alpha-} b_m^{\alpha+} b_j^{\beta-} b_n^{\beta+} \rangle - \sum_{\beta \neq \alpha} \sum_{j \neq m, n} g_{jm}^{\beta*} \langle b_m^{\beta-} b_j^{\beta+} b_n^{\alpha-} b_m^{\alpha+} \rangle \\
 &+ 2 \operatorname{Re} \{ g_{nm}^{\alpha} \left\langle \left(I - \sum_{\beta} b_n^{\beta-} b_n^{\beta+} \right) \left(I - \sum_{\beta} b_m^{\beta-} b_m^{\beta+} \right) \right\rangle - g_{nm}^{\alpha} \langle b_n^{\alpha-} b_n^{\alpha+} \left(I - \sum_{\beta} b_m^{\beta-} b_m^{\beta+} \right) \rangle \right\} \\
 &- g_{nm}^{\alpha*} \left\langle b_m^{\alpha-} b_m^{\alpha+} \left(I - \sum_{\beta} b_n^{\beta-} b_n^{\beta+} \right) \right\rangle.
 \end{aligned} \tag{A14}$$

This gives a set of differential equations that is not closed. This problem is eschewed by implementing the following factorizations:

$$\begin{aligned}
 \langle b_n^{\alpha-} b_j^{\alpha+} b_m^{\beta-} b_m^{\beta+} \rangle &\simeq \langle b_n^{\alpha-} b_j^{\alpha+} \rangle \langle b_m^{\beta-} b_m^{\beta+} \rangle, \\
 \langle b_m^{\beta-} b_j^{\beta+} b_n^{\alpha-} b_m^{\alpha+} \rangle &\simeq \langle b_m^{\beta-} b_j^{\beta+} \rangle \langle b_n^{\alpha-} b_m^{\alpha+} \rangle, \\
 \langle b_m^{\alpha-} b_m^{\alpha+} b_n^{\beta-} b_n^{\beta+} \rangle &\simeq \langle b_m^{\alpha-} b_m^{\alpha+} \rangle \langle b_n^{\beta-} b_n^{\beta+} \rangle, \\
 \langle b_n^{\alpha-} b_j^{\alpha+} b_m^{\alpha-} b_m^{\alpha+} \rangle &\simeq \langle b_n^{\alpha-} b_j^{\alpha+} \rangle \langle b_m^{\alpha-} b_m^{\alpha+} \rangle, \\
 \langle b_m^{\alpha-} b_m^{\alpha+} b_n^{\alpha-} b_n^{\alpha+} \rangle &\simeq \langle b_m^{\alpha-} b_m^{\alpha+} \rangle \langle b_n^{\alpha-} b_n^{\alpha+} \rangle.
 \end{aligned} \tag{A15}$$

This results in the final equation

$$\begin{aligned}
 \frac{d}{dt} \langle b_n^{\alpha-} b_m^{\alpha+} \rangle &= - \langle b_n^{\alpha-} b_m^{\alpha+} \rangle \sum_{\beta} \Gamma_{\beta} + \sum_{j \neq m, n} g_{jm}^{\alpha*} \langle b_n^{\alpha-} b_j^{\alpha+} \rangle \left\{ 1 - \langle b_m^{\alpha-} b_m^{\alpha+} \rangle - \sum_{\beta} \langle b_m^{\beta-} b_m^{\beta+} \rangle \right\} \\
 &+ \sum_{j \neq m, n} g_{nj}^{\alpha} \langle b_j^{\alpha-} b_m^{\alpha+} \rangle \left\{ 1 - \langle b_n^{\alpha-} b_n^{\alpha+} \rangle - \sum_{\beta} \langle b_n^{\beta-} b_n^{\beta+} \rangle \right\} \\
 &- \sum_{\beta \neq \alpha} \sum_{j \neq m, n} g_{nj}^{\beta} \langle b_n^{\alpha-} b_m^{\alpha+} \rangle \langle b_j^{\beta-} b_n^{\beta+} \rangle - \sum_{\beta \neq \alpha} \sum_{j \neq m, n} g_{jm}^{\beta*} \langle b_n^{\alpha-} b_m^{\alpha+} \rangle \langle b_m^{\beta-} b_j^{\beta+} \rangle
 \end{aligned}$$

$$\begin{aligned}
& + 2 \operatorname{Re}\{g_{nm}^{\alpha}\} \left(1 - \sum_{\beta} \langle b_n^{\beta-} b_n^{\beta+} \rangle\right) \left(1 - \sum_{\beta} \langle b_m^{\beta-} b_m^{\beta+} \rangle\right) \\
& - g_{nm}^{\alpha} \langle b_n^{\alpha-} b_n^{\alpha+} \rangle \left(1 - \sum_{\beta} \langle b_m^{\beta-} b_m^{\beta+} \rangle\right) - g_{nm}^{\alpha*} \langle b_m^{\alpha-} b_m^{\alpha+} \rangle \left(1 - \sum_{\beta} \langle b_n^{\beta-} b_n^{\beta+} \rangle\right).
\end{aligned}$$

-
- [1] R. H. Dicke, *Phys. Rev.* **93**, 99 (1954).
- [2] R. J. Bettles, S. A. Gardiner, and C. S. Adams, *Phys. Rev. A* **92**, 063822 (2015).
- [3] R. J. Bettles, S. A. Gardiner, and C. S. Adams, *Phys. Rev. Lett.* **116**, 103602 (2016).
- [4] R. T. Sutherland and F. Robicheaux, *Phys. Rev. A* **93**, 023407 (2016).
- [5] R. T. Sutherland and F. Robicheaux, *Phys. Rev. A* **94**, 013847 (2016).
- [6] J. Marek, *J. Phys. B* **12**, L229 (1979).
- [7] M. O. Scully, E. S. Fry, C. H. Raymond Ooi, and K. Wódkiewicz, *Phys. Rev. Lett.* **96**, 010501 (2006).
- [8] M. O. Scully, *Laser Phys.* **17**, 635 (2007).
- [9] W. Guerin, M. O. Araújo, and R. Kaiser, *Phys. Rev. Lett.* **116**, 083601 (2016).
- [10] E. Akkermans, A. Gero, and R. Kaiser, *Phys. Rev. Lett.* **101**, 103602 (2008).
- [11] S. Bromley, B. Zhu, M. Bishof, X. Zhang, T. Bothwell, J. Schachenmayer, T. L. Nicholson, R. Kaiser, S. F. Yelin, M. D. Lukin, A. Rey, and J. Ye, *Nat. Commun.* **7** 11039 (2016).
- [12] J. O. Day, E. Brekke, and T. G. Walker, *Phys. Rev. A* **77**, 052712 (2008).
- [13] T. Wang, S. F. Yelin, R. Côté, E. E. Eyler, S. M. Farooqi, P. L. Gould, M. Koštrun, D. Tong, and D. Vranceanu, *Phys. Rev. A* **75**, 033802 (2007).
- [14] D. D. Grimes, S. L. Coy, T. J. Barnum, Y. Zhou, S. F. Yelin, and R. W. Field, [arXiv:1604.03005](https://arxiv.org/abs/1604.03005).
- [15] S. J. Roof, K. J. Kemp, M. D. Havey, and I. M. Sokolov, *Phys. Rev. Lett.* **117**, 073003 (2016).
- [16] A. Crubellier, S. Liberman, P. Pillet, and M. Schweighofer, *J. Phys. B* **14**, L177 (1981).
- [17] M. O. Scully, *Phys. Rev. Lett.* **102**, 143601 (2009).
- [18] M. O. Scully, *Phys. Rev. Lett.* **115**, 243602 (2015).
- [19] L. Moi, P. Goy, M. Gross, J. M. Raimond, C. Fabre, and S. Haroche, *Phys. Rev. A* **27**, 2043 (1983).
- [20] S. D. Jenkins, J. Ruostekoski, J. Javanainen, R. Bourgain, S. Jennewein, Y. R. P. Sortais, and A. Browaeys, *Phys. Rev. Lett.* **116**, 183601 (2016).
- [21] M. D. Lee, S. D. Jenkins, and J. Ruostekoski, *Phys. Rev. A* **93**, 063803 (2016).
- [22] S. Jennewein, M. Besbes, N. J. Schilder, S. D. Jenkins, C. Sauvan, J. Ruostekoski, J.-J. Greffet, Y. R. P. Sortais, and A. Browaeys, *Phys. Rev. Lett.* **116**, 233601 (2016).
- [23] R. A. Molina, E. Benito-Matías, A. D. Somoza, L. Chen, and Y. Zhao, *Phys. Rev. E* **93**, 022414 (2016).
- [24] R. Monshouwer, M. Abrahamsson, F. Van Mourik, and R. Van Grondelle, *J. Phys. Chem. B* **101**, 7241 (1997).
- [25] C. Bradac, M. Johnsson, M. van Breugel, B. Baragiola, R. Martin, M. L. Juan, G. Brennen, and T. Volz, [arXiv:1608.03119](https://arxiv.org/abs/1608.03119).
- [26] M. Scheibner, T. Schmidt, L. Worschech, A. Forchel, G. Bacher, T. Passow, and D. Hommel, *Nat. Phys.* **3**, 106 (2007).
- [27] K. Baumann, C. Guerlin, F. Brennecke, and T. Esslinger, *Nature (London)* **464**, 1301 (2010).
- [28] R. Friedberg, S. Hartmann, and J. Manassah, *Phys. Lett. A* **40**, 365 (1972).
- [29] M. Gross and S. Haroche, *Phys. Rep.* **93**, 301 (1982).
- [30] J. Han and H. Maeda, *Can. J. Phys.* **92**, 1130 (2014).
- [31] T. Zhou, B. G. Richards, and R. R. Jones, *Phys. Rev. A* **93**, 033407 (2016).
- [32] R. Friedberg, S. R. Hartmann, and J. T. Manassah, *Phys. Rep.* **7**, 101 (1973).
- [33] H. Carmichael and K. Kim, *Opt. Commun.* **179**, 417 (2000).
- [34] M. Xu, D. A. Tieri, and M. J. Holland, *Phys. Rev. A* **87**, 062101 (2013).
- [35] S. Hartmann, [arXiv:1201.1732](https://arxiv.org/abs/1201.1732).
- [36] G. S. Agarwal, *Quantum Optics* (Cambridge University Press, Cambridge, 2012).
- [37] N. E. Rehler and J. H. Eberly, *Phys. Rev. A* **3**, 1735 (1971).
- [38] N. Skribanowitz, I. Herman, J. MacGillivray, and M. Feld, *Phys. Rev. Lett.* **30**, 309 (1973).
- [39] F. Damanet and J. Martin, *J. Phys. B: At. Mol. Opt. Phys.* **49**, 22 (2016).
- [40] J. Pellegrino, R. Bourgain, S. Jennewein, Y. R. P. Sortais, A. Browaeys, S. D. Jenkins, and J. Ruostekoski, *Phys. Rev. Lett.* **113**, 133602 (2014).
- [41] A. Goetschy, *Lumière dans les milieux atomiques désordonnés: Théorie des matrices Euclidiennes et lasers aléatoires*, Ph.D. thesis, Université de Grenoble, 2011.
- [42] T. Bienaimé, N. Piovella, and R. Kaiser, *Phys. Rev. Lett.* **108**, 123602 (2012).
- [43] G. Facchinetti, S. D. Jenkins, and J. Ruostekoski, *Phys. Rev. Lett.* **117**, 243601 (2016).
- [44] B. Sun and F. Robicheaux, *Phys. Rev. A* **78**, 040701 (2008).
- [45] T. F. Gallagher, *Rydberg Atoms* (Cambridge University Press, Cambridge, 2005), Vol. 3.